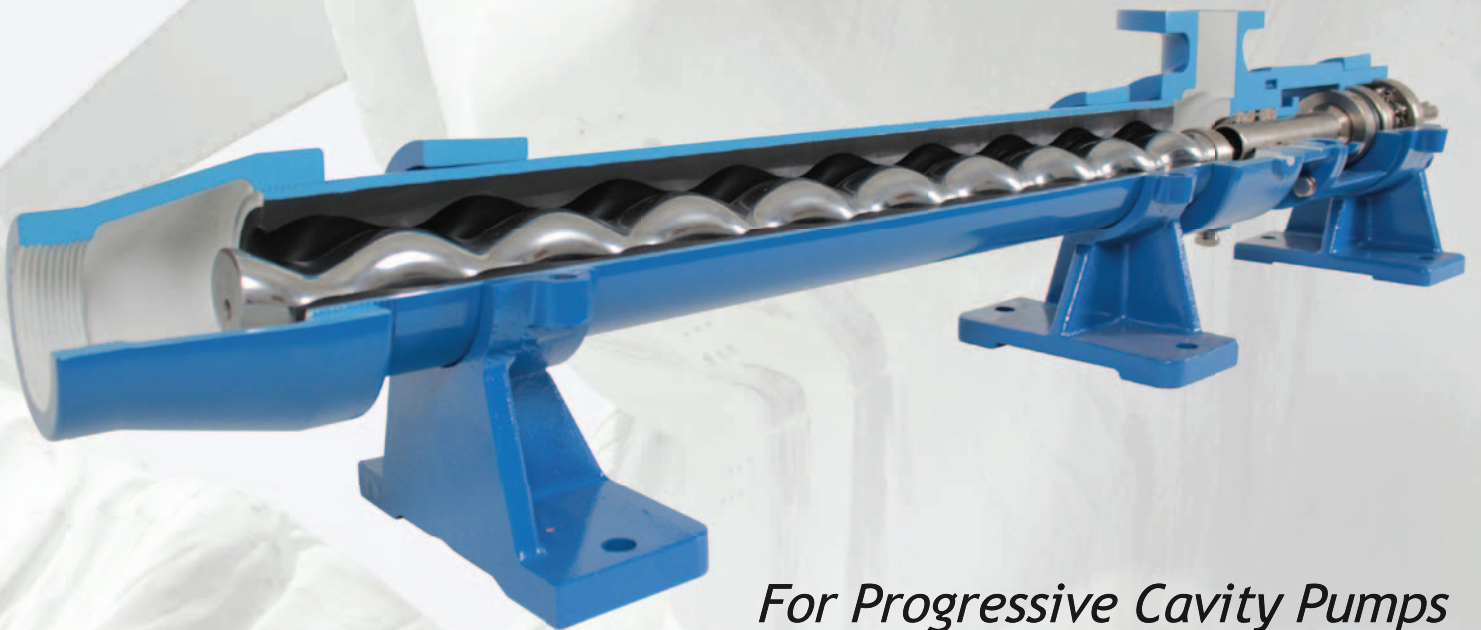


# **Liberty**

**Process Equipment, Inc.**



*For Progressive Cavity Pumps*

# LIBERTY

On July 4, 2000, Liberty Process Equipment, Inc. was launched with the goal of providing progressive cavity pump users with market leading customer service and high quality pumps and spare parts at an affordable price. In addition, Liberty offers engineered pump packages for difficult pumping applications.

For more than a decade Liberty has met our goals to respond faster, ship quicker and offer engineered pump packages to meet the needs of our customers. We are continually working on improving our systems and processes to provide even better service to the progressive cavity pump marketplace.

Our factory trained sales engineers can give you the quality pump solutions you require, with on time delivery and within your budget requirements. Our pump engineers at Liberty have decades of progressive cavity pump experiences providing rugged pumps with pump drives and accessories tailor made for the application. Whether your pump system requirement is with gear reduction or v-belts systems or simple mechanical seals or cartridge seal assemblies, we have the experience to meet your pump package requirements.

## AMERICAN SERIES

- “Wobble Stator” Design
- Close & Long Coupled Models
- Cast & Stainless Steel
- Up To 53 GPM
- Pressures Up To 150 PSI



## MILLENNIUM SERIES

- Rugged Gear Joint Design
- Easily Interchangeable
- Capacities up to 875 GPM
- Pressures To 450 PSI

## LIBERTY SERIES

- Proven Pin Joint Design
- Quick Delivery
- Up to 400 GPM
- Pressures To 450 PSI



# PROGRESSIVE CAVITY PUMPS

Liberty Process Equipment, Inc. is a market leader in the field of economically priced progressive cavity pumps and spare parts for the North American pump market.

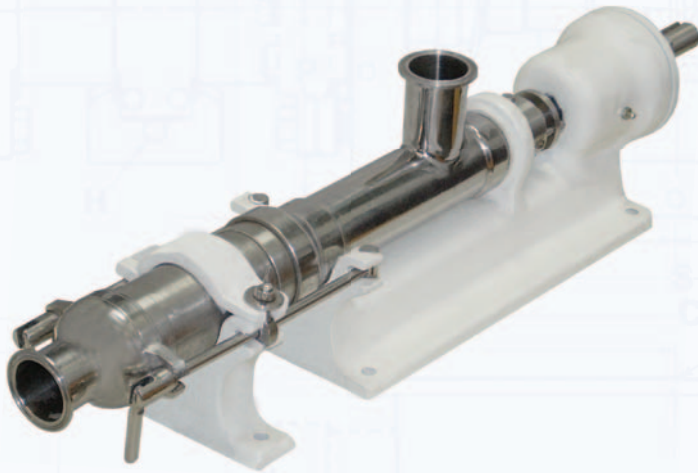
We specialize in seven different series of progressive cavity pumps. We offer pumps for flows from a fraction of a gallon for polymer dosing or chemical feed to larger pumps for sludge applications for the waste water and sewage industry. We also have a series of sanitary pumps.

Here at Liberty, we also believe the most important aspect of our service is product

delivery time. From our facility near Chicago in Arlington Heights, IL, we stock seven complete series of progressive cavity pumps so we are able to ship the same day that you place your order. Additionally, we stock all our spare parts and also aftermarket and OEM spare parts for many other brands of progressive cavity pumps. If you need a pump or spare parts quickly and at a competitive price, Liberty Process is here to meet your needs. Just contact us at [sales@libertyprocess.com](mailto:sales@libertyprocess.com).

## JUSTICE SERIES JJ

- Designed For Highly Viscous Pumping
- Open Hopper Construction
- Up To 440 GPM / 350 PSI



## FREEDOM SERIES FR

- Sanitary Design
- Quick Disassembly / Cleaning
- Both Tri-clamp and Hopper
- Up to 300 GPM / 350 PSI

## VICTORY SERIES Vi

- Aftermarket Seepex® Parts
- Fits BN & MD Seepex® Series
- Rotors, Stators, Joint Kits And More



## PUMPS & SPARE PARTS

Liberty Process Equipment, Inc. has been recognized as America's leading source for aftermarket replacement progressive cavity pumps, pump parts and pumping solutions for most of the popular brands of progressive cavity pumps in use today for over a decade.

Liberty Process Equipment offers same day shipment on a full line of high-quality drop-in progressive cavity pump parts. Save money and more importantly time by being able to get the in-stock parts you need at a price that's right for your budget.

All of our progressive cavity pumps and parts come with a full money-back guarantee for your total satisfaction, are made under ISO 9001 quality control standards and are performance tested for optimal application use.



Liberty Process Equipment, Inc.  
2525 South Clearbrook Drive  
Arlington Heights, IL 60005  
Phone: (847) 640-7867  
Fax: (847) 640-7855  
[www.libertyprocess.com](http://www.libertyprocess.com)  
[sales@libertyprocess.com](mailto:sales@libertyprocess.com)