

Pump:

Type: Advance 1000
 Speed: 3,450 rpm
 Connection Sizes:
 Suction: 1.5 in
 Discharge: 1.5 in

Fluid:

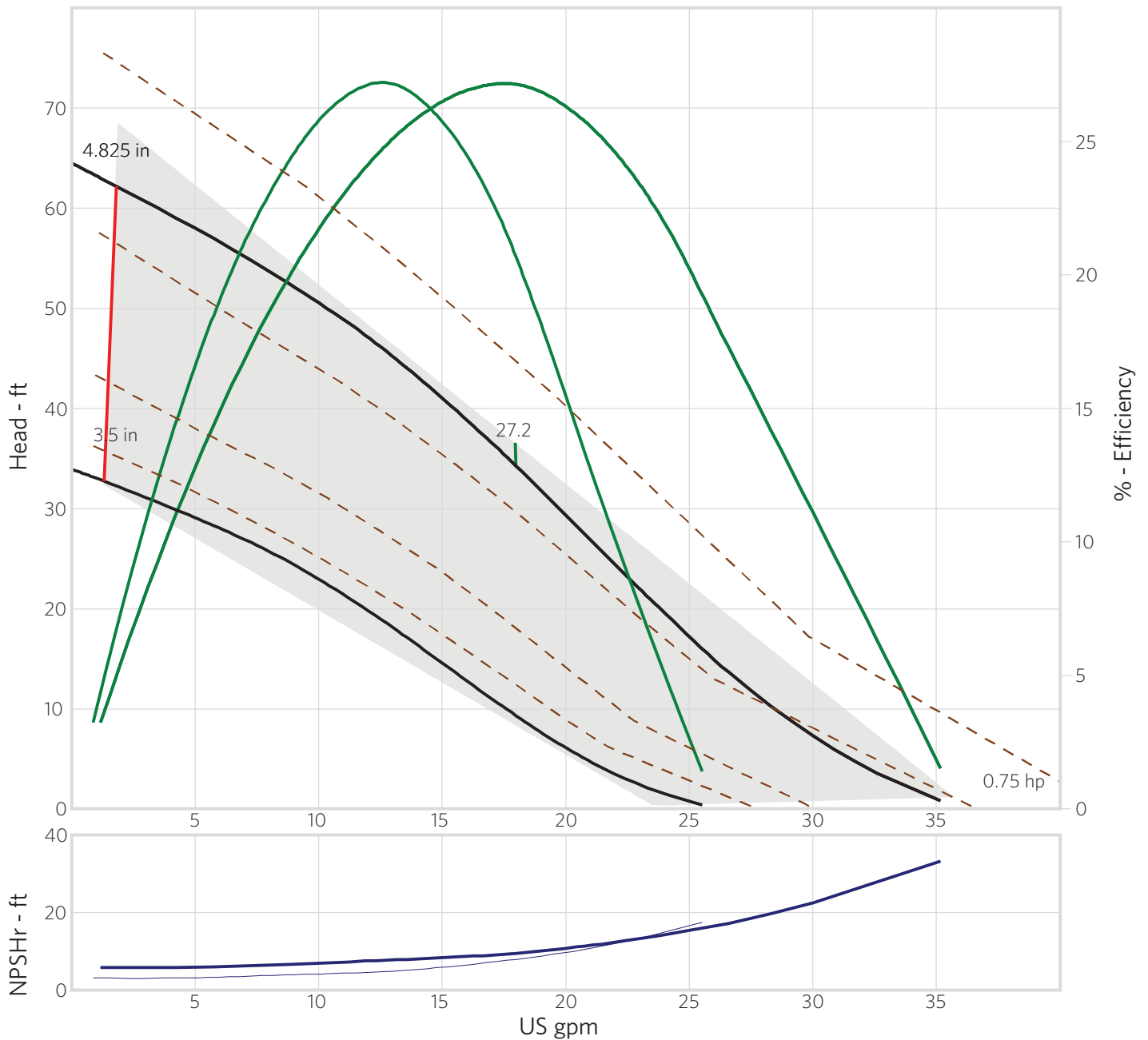
Water
 SG: 1
 Viscosity: 1.105 cP
 Temperature: 60 °F
 Vapor pressure: 0.2563 psi a
 Atm pressure: 14.7 psi a

Pump Limits:

Temperature: 180 °F
 Pressure: 100 psi g
 Sphere size: 0.105 in

Motor:

Standard: NEMA
 Enclosure: TEFC
 Full Speed: 3,450 rpm
 Sizing criteria: Max Power on Design Curve



Pump:

Type: Advance 1000
 Speed: 3,450 rpm
 Connection Sizes:
 Suction: 1.5 in
 Discharge: 1.5 in

Fluid:

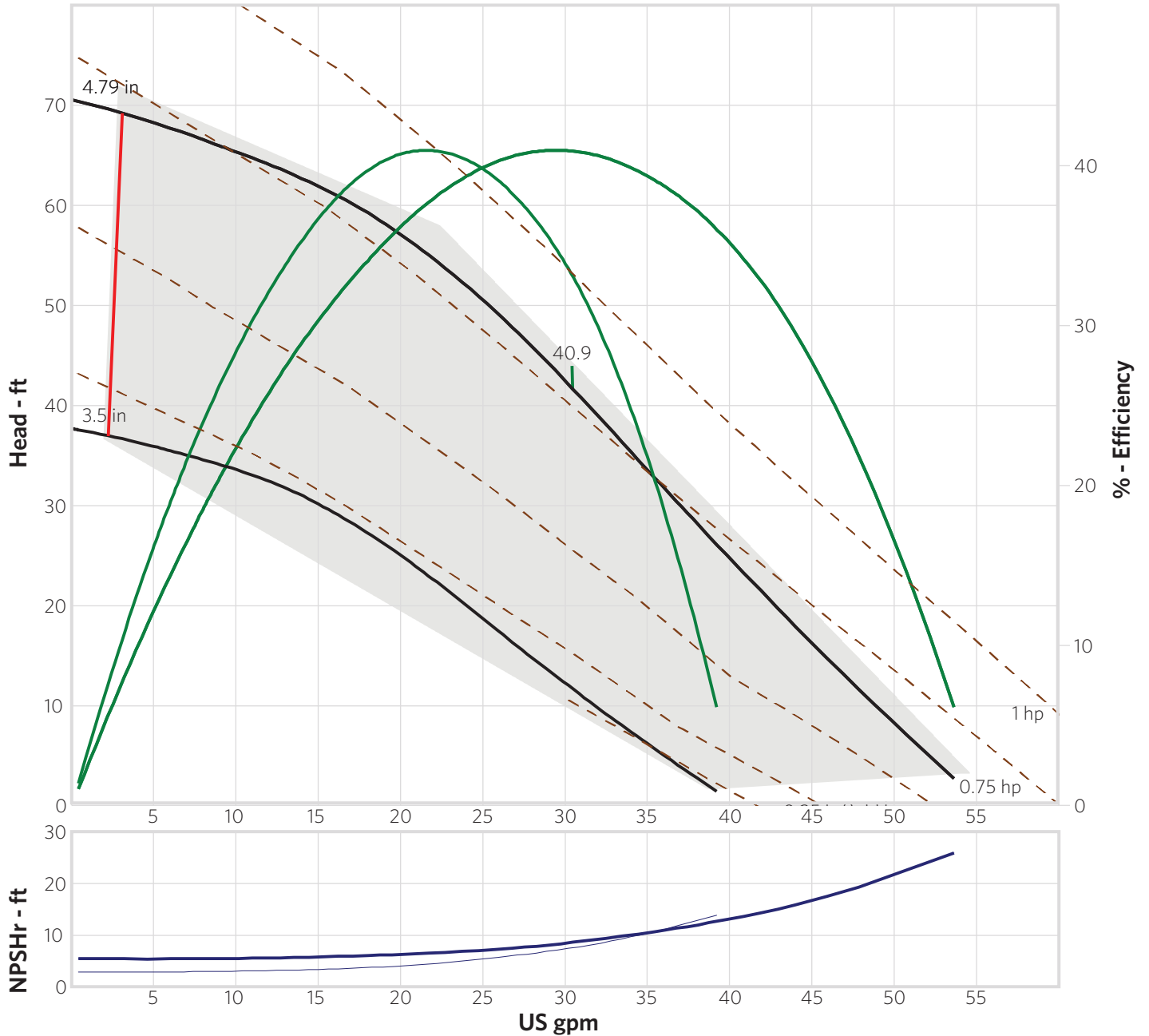
Water
 SG: 1
 Viscosity: 1.105 cP
 Temperature: 60 °F
 Vapor pressure: 0.2563 psi a
 Atm pressure: 14.7 psi a

Pump Limits:

Temperature: 180 °F
 Pressure: 100 psi g
 Sphere size: 0.12 in

Motor:

Standard: NEMA
 Enclosure: TEFC
 Full Speed: 3,450 rpm
 Sizing criteria: Max Power on Design Curve



Pump:

Type: Advance 1000 Speed: 3,450 rpm
 Connection Sizes: Suction: 1.5 in
 Discharge: 1.5 in

Fluid:

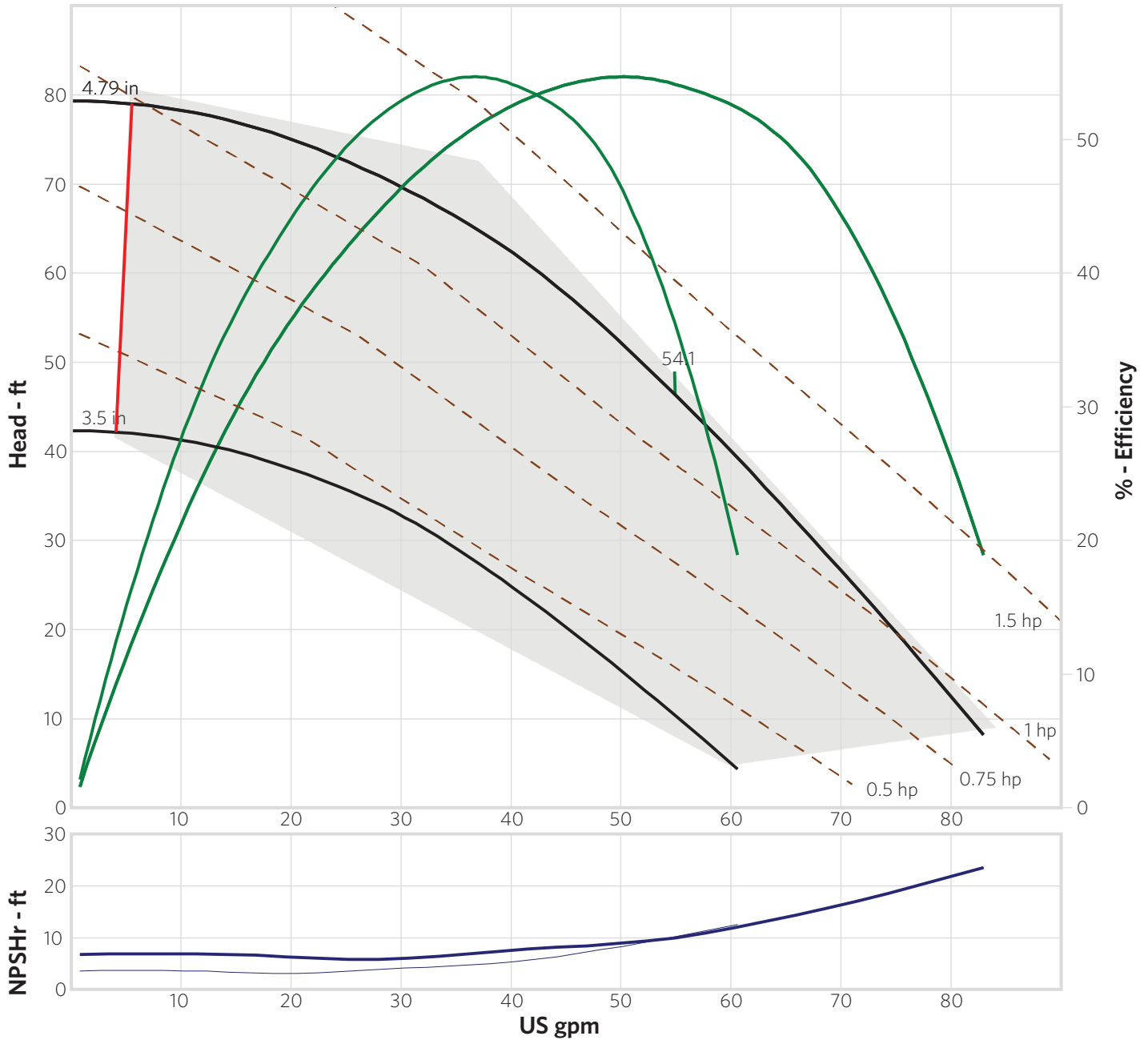
Water Temperature: 60 °F
 SG: 1 Vapor pressure: 0.2563 psi a
 Viscosity: 1.105 cP Atm pressure: 14.7 psi a

Pump Limits:

Temperature: 180 °F
 Pressure: 100 psi g
 Sphere size: 0.306 in

Motor:

Standard: NEMA Full Speed: 3,450 rpm
 Enclosure: TEFC
 Sizing criteria: Max Power on Design Curve



Pump:

Type: Advance 1000
 Speed: 3,450 rpm
 Connection Sizes:
 Suction: 1.5 in
 Discharge: 1.5 in

Fluid:

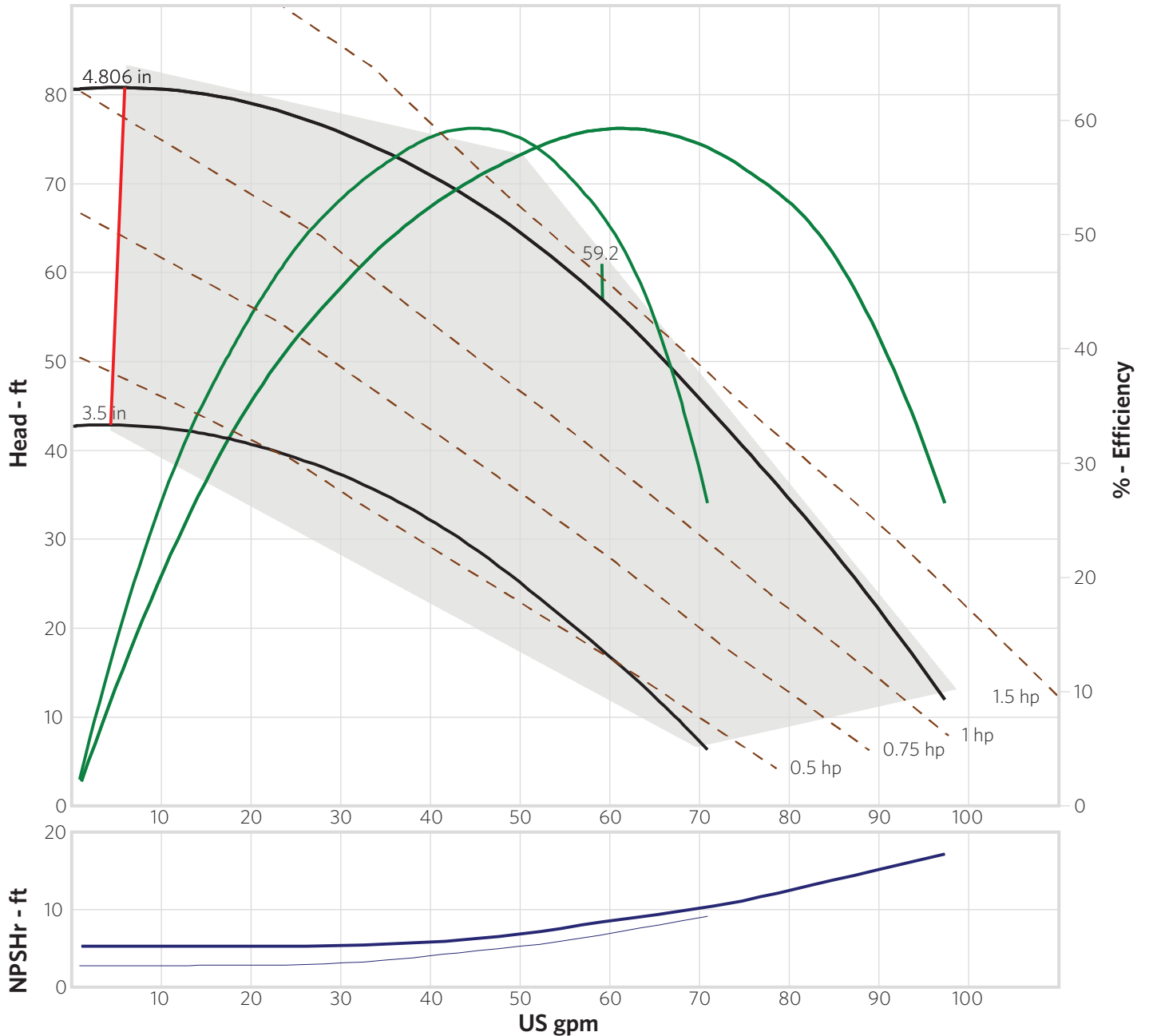
Water
 SG: 1
 Viscosity: 1.105 cP
 Temperature: 60 °F
 Vapor pressure: 0.2563 psi a
 Atm pressure: 14.7 psi a

Pump Limits:

Temperature: 180 °F
 Pressure: 100 psi g
 Sphere size: 0.397 in

Motor:

Standard: NEMA
 Enclosure: TEFC
 Full Speed: 3,450 rpm
 Sizing criteria: Max Power on Design Curve



Pump:

Type: Advance 1000
 Speed: 3,450 rpm
 Connection Sizes:
 Suction: 1.5 in
 Discharge: 1.5 in

Fluid:

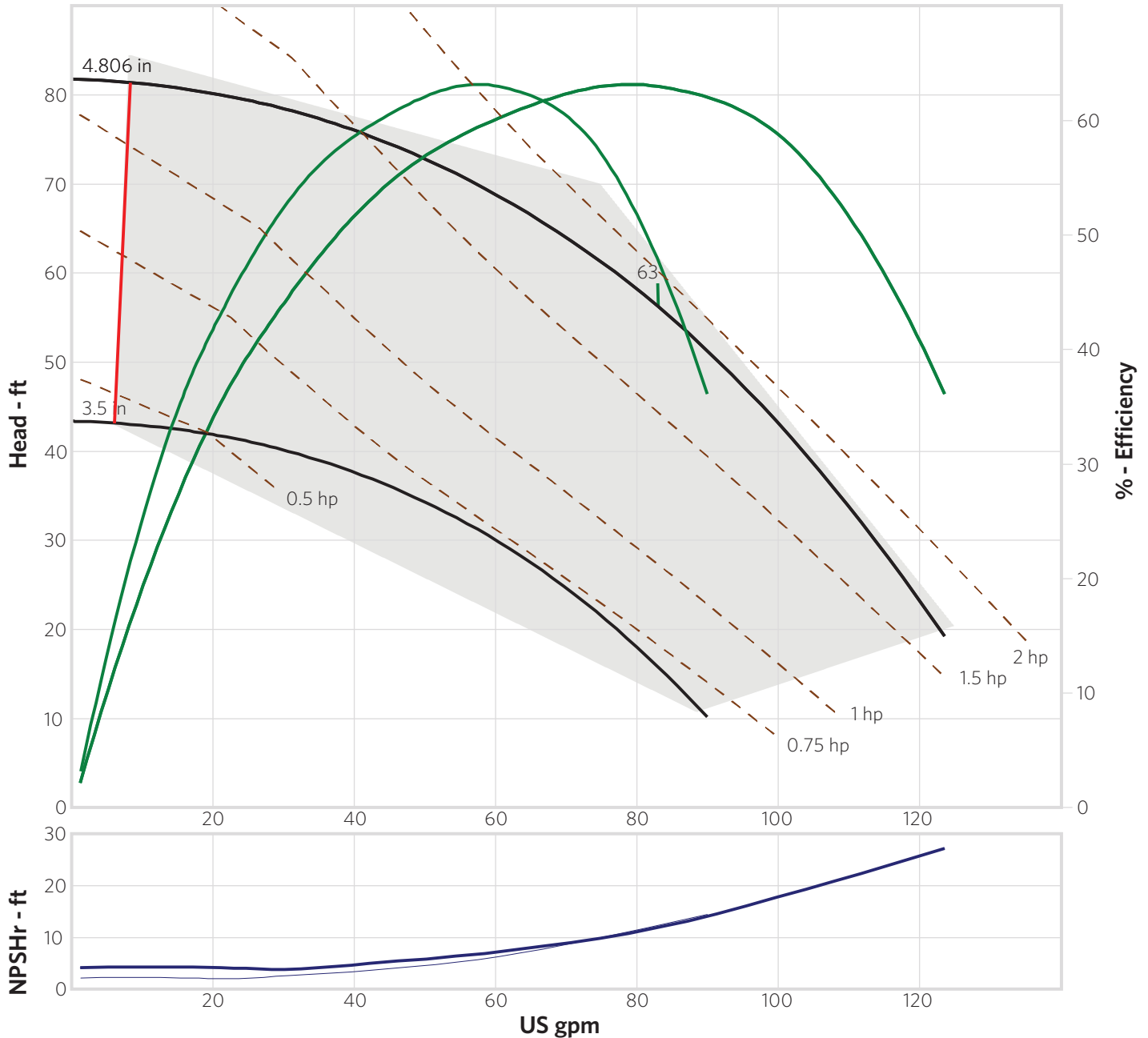
Water
 SG: 1
 Viscosity: 1.105 cP
 Temperature: 60 °F
 Vapor pressure: 0.2563 psi a
 Atm pressure: 14.7 psi a

Pump Limits:

Temperature: 180 °F
 Pressure: 100 psi g
 Sphere size: 0.306 in

Motor:

Standard: NEMA
 Enclosure: TEFC
 Full Speed: 3,450 rpm
 Sizing criteria: Max Power on Design Curve



Pump:

Type: Advance 1000 Speed: 3,450 rpm
 Connection Sizes: Suction: 1.5 in
 Discharge: 1.5 in

Fluid:

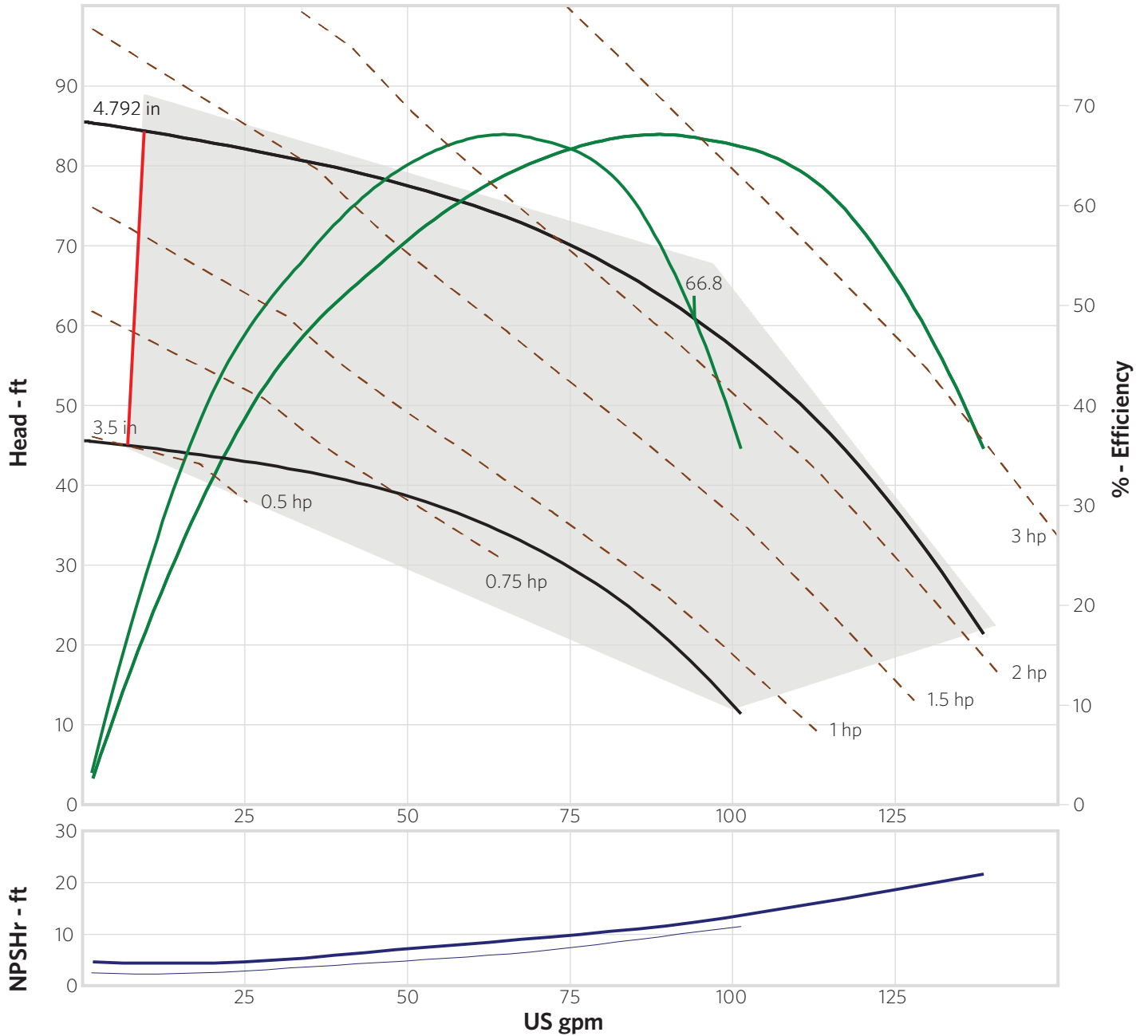
Water Temperature: 60 °F
 SG: 1 Vapor pressure: 0.2563 psi a
 Viscosity: 1.105 cP Atm pressure: 14.7 psi a

Pump Limits:

Temperature: 180 °F
 Pressure: 100 psi g
 Sphere size: 0.388 in

Motor:

Standard: NEMA Full Speed: 3,450 rpm
 Enclosure: TEFC
 Sizing criteria: Max Power on Design Curve



Pump:

Type: Advance 1000
 Speed: 3,450 rpm
 Connection Sizes:
 Suction: 1.5 in
 Discharge: 1.5 in

Fluid:

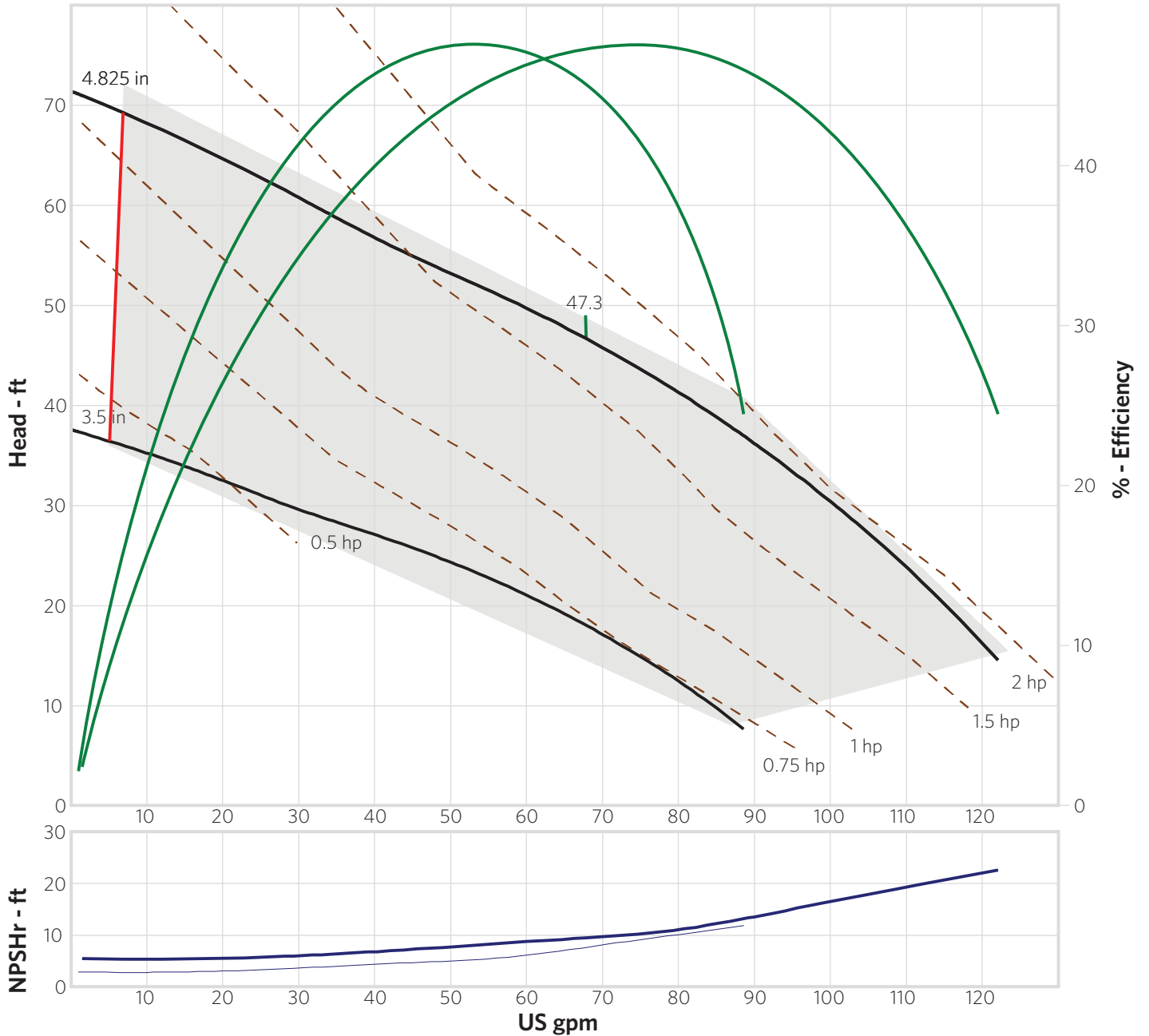
Water
 SG: 1
 Viscosity: 1.105 cP
 Temperature: 60 °F
 Vapor pressure: 0.2563 psi a
 Atm pressure: 14.7 psi a

Pump Limits:

Temperature: 180 °F
 Pressure: 100 psi g
 Sphere size: 0.484 in

Motor:

Standard: NEMA
 Enclosure: TEFC
 Full Speed: 3,450 rpm
 Sizing criteria: Max Power on Design Curve



Pump:

Type: Advance 1000 Speed: 3,450 rpm
 Connection Sizes: Suction: 1.5 in
 Discharge: 1.5 in

Fluid:

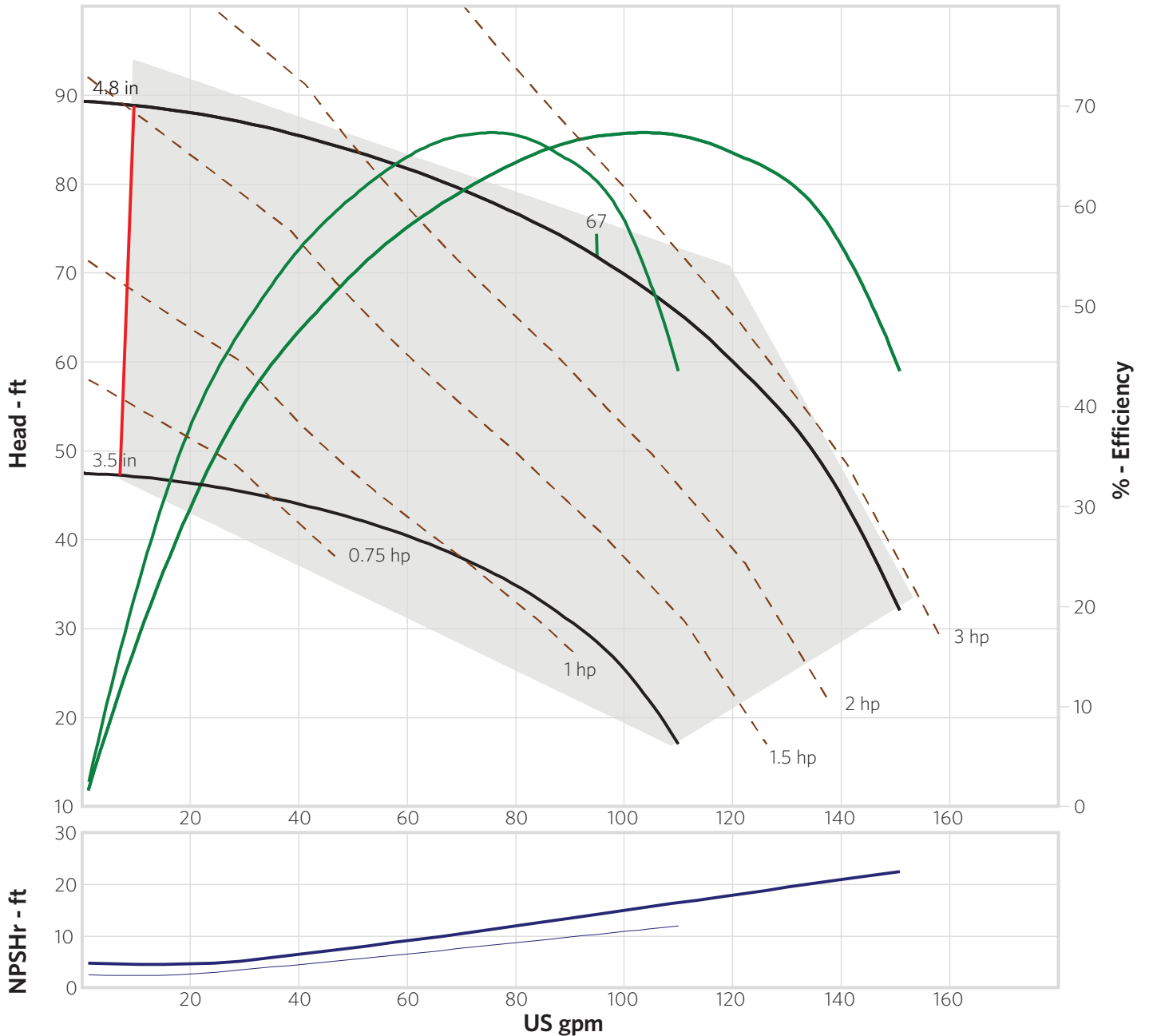
Water Temperature: 60 °F
 SG: 1 Vapor pressure: 0.2563 psi a
 Viscosity: 1.105 cP Atm pressure: 14.7 psi a

Pump Limits:

Temperature: 180 °F
 Pressure: 100 psi g
 Sphere size: 0.499 in

Motor:

Standard: NEMA Full Speed: 3,450 rpm
 Enclosure: TEFC
 Sizing criteria: Max Power on Design Curve



Pump:

Type: Advance 1000
 Speed: 1,750 rpm
 Connection Sizes:
 Suction: 1.5 in
 Discharge: 1.5 in

Fluid:

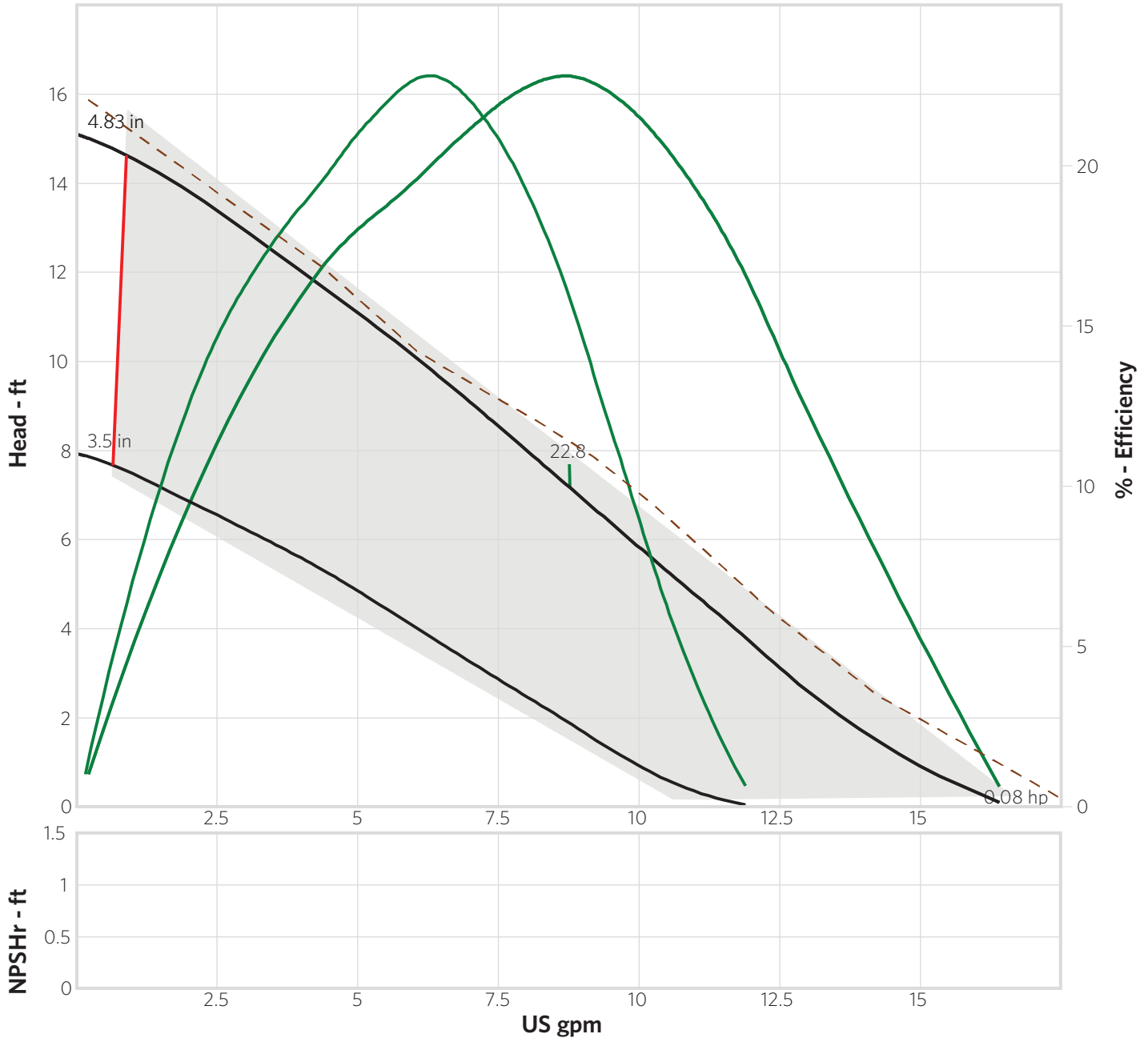
Water
 SG: 1
 Viscosity: 1.105 cP
 Temperature: 60 °F
 Vapor pressure: 0.2563 psi a
 Atm pressure: 14.7 psi a

Pump Limits:

Temperature: 180 °F
 Pressure: 100 psi g
 Sphere size: 0.105 in

Motor:

Standard: NEMA
 Enclosure: TEFC
 Full Speed: 1,750 rpm
 Sizing criteria: Max Power on Design Curve



Pump:

Type: Advance 1000 Speed: 1,750 rpm
 Connection Sizes: Suction: 1.5 in
 Discharge: 1.5 in

Fluid:

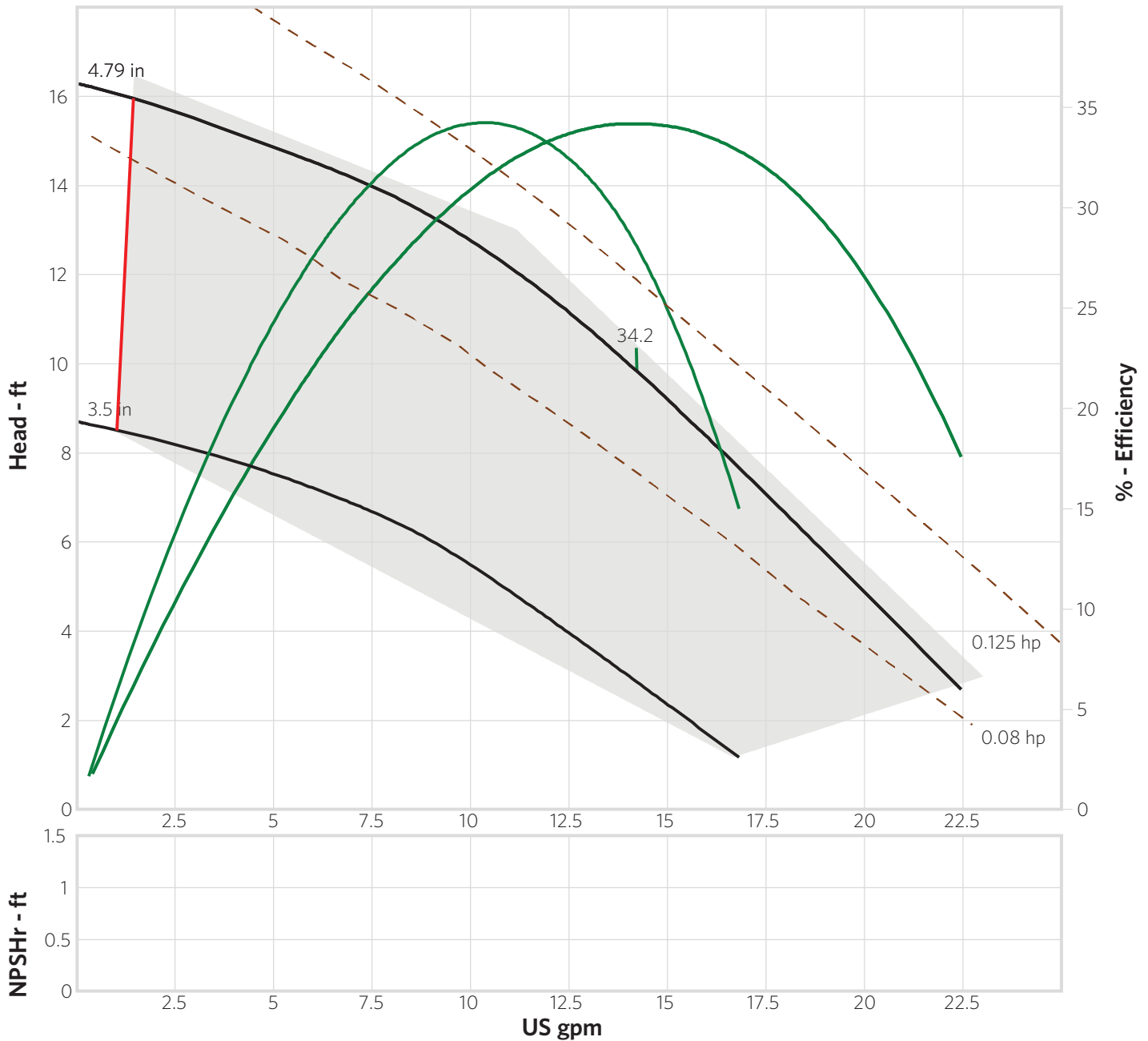
Water Temperature: 60 °F
 SG: 1 Vapor pressure: 0.2563 psi a
 Viscosity: 1.105 cP Atm pressure: 14.7 psi a

Pump Limits:

Temperature: 180 °F
 Pressure: 100 psi g
 Sphere size: 0.12 in

Motor:

Standard: NEMA Full Speed: 1,750 rpm
 Enclosure: TEFC
 Sizing criteria: Max Power on Design Curve



Pump:

Type: Advance 1000
 Speed: 1,750 rpm
 Connection Sizes:
 Suction: 1.5 in
 Discharge: 1.5 in

Fluid:

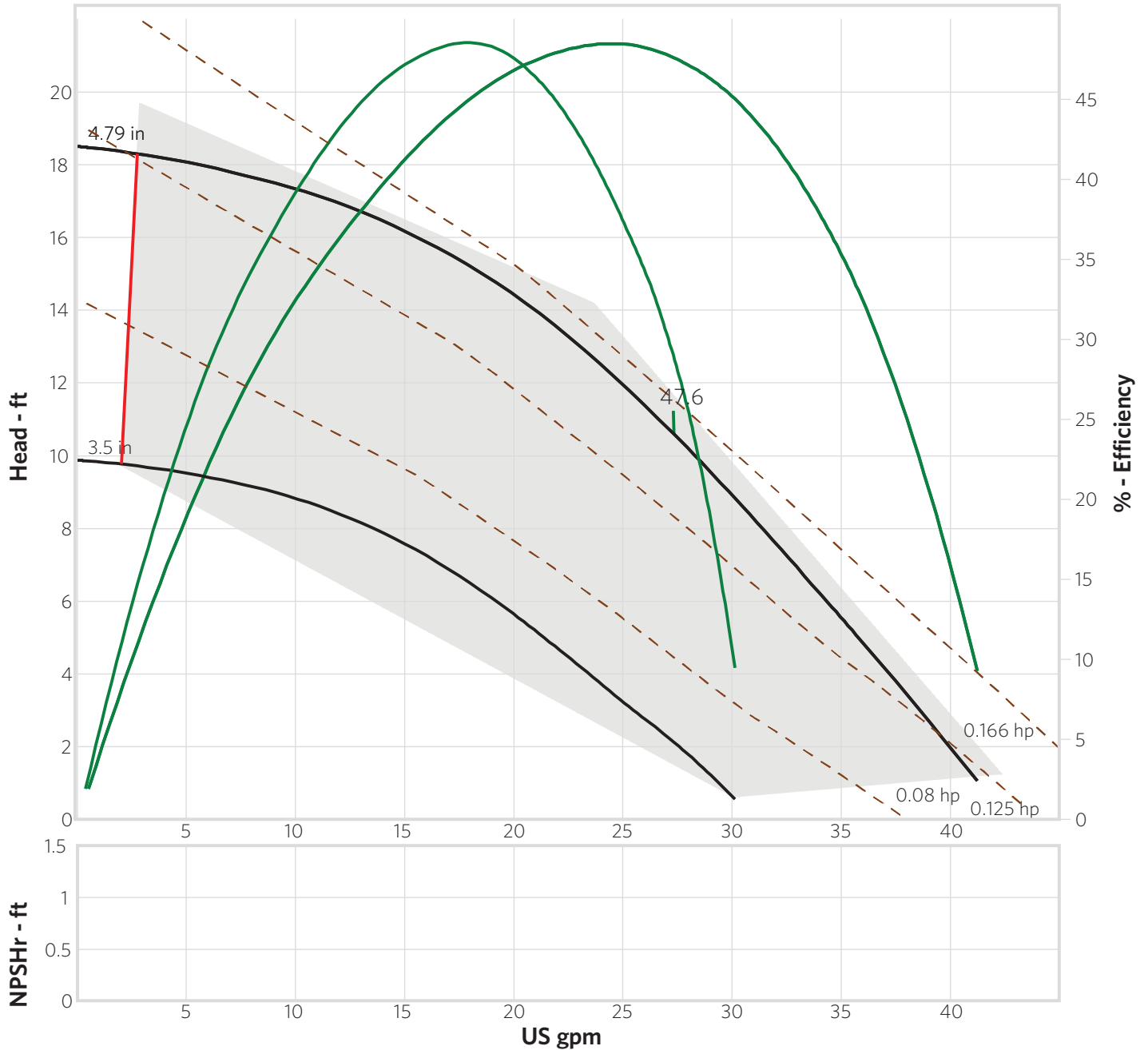
Water
 SG: 1
 Viscosity: 1.105 cP
 Temperature: 60 °F
 Vapor pressure: 0.2563 psi a
 Atm pressure: 14.7 psi a

Pump Limits:

Temperature: 180 °F
 Pressure: 100 psi g
 Sphere size: 0.306 in

Motor:

Standard: NEMA
 Enclosure: TEFC
 Full Speed: 1,750 rpm
 Sizing criteria: Max Power on Design Curve



Pump:

Type: Advance 1000 Speed: 1,750 rpm

Connection Sizes: Suction: 1.5 in Discharge: 1.5 in

Fluid:

Water
SG: 1
Viscosity: 1.105 cP

Temperature: 60 °F
Vapor pressure: 0.2563 psi a
Atm pressure: 14.7 psi a

Pump Limits:

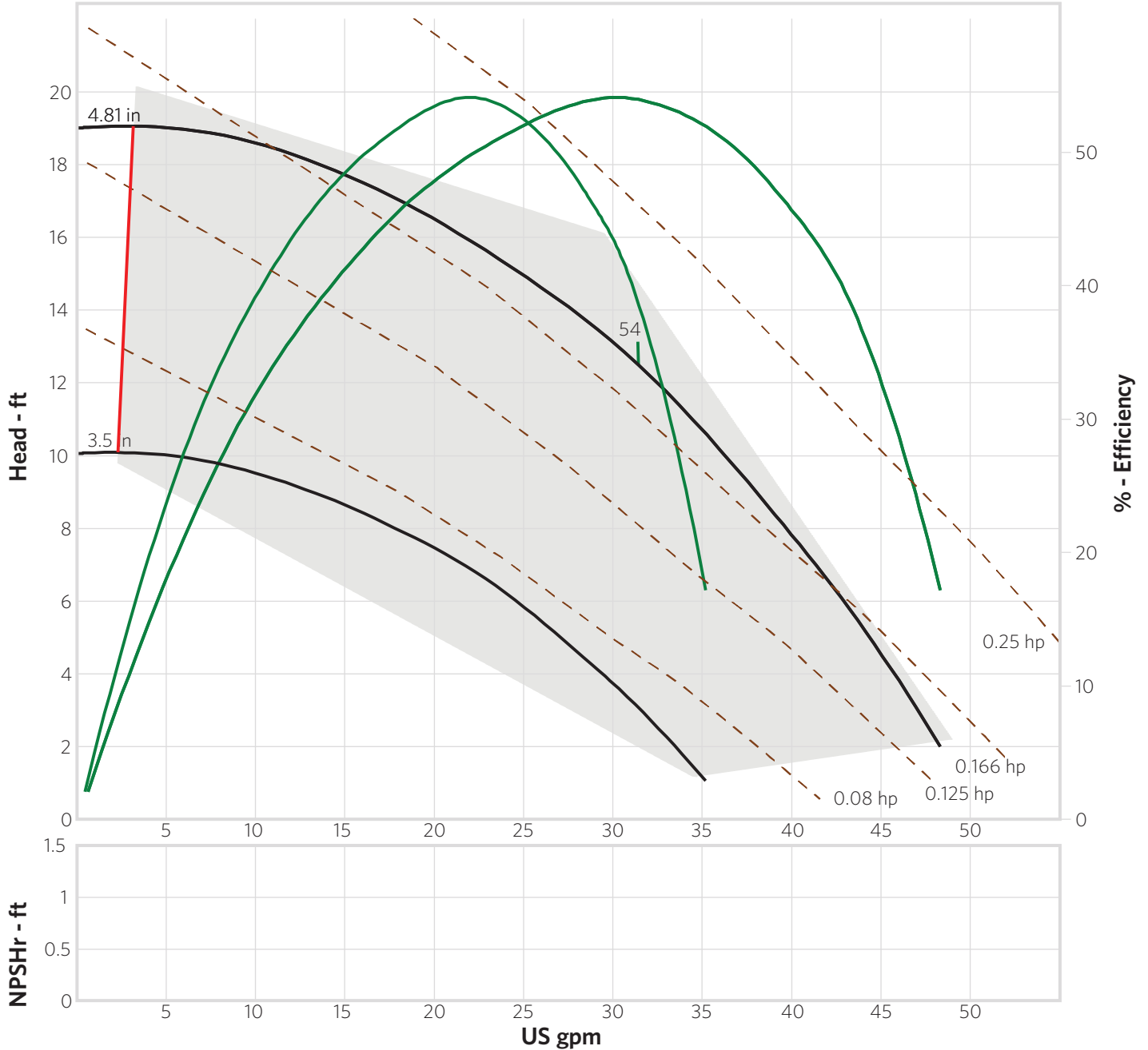
Temperature: 180 °F
Pressure: 100 psi g
Sphere size: 0.397 in

Motor:

Standard: NEMA
Enclosure: TEFC

Full Speed: 1,750 rpm

Sizing criteria: Max Power on Design Curve



Pump:

Type: Advance 1000
 Speed: 1,750 rpm
 Connection Sizes:
 Suction: 1.5 in
 Discharge: 1.5 in

Fluid:

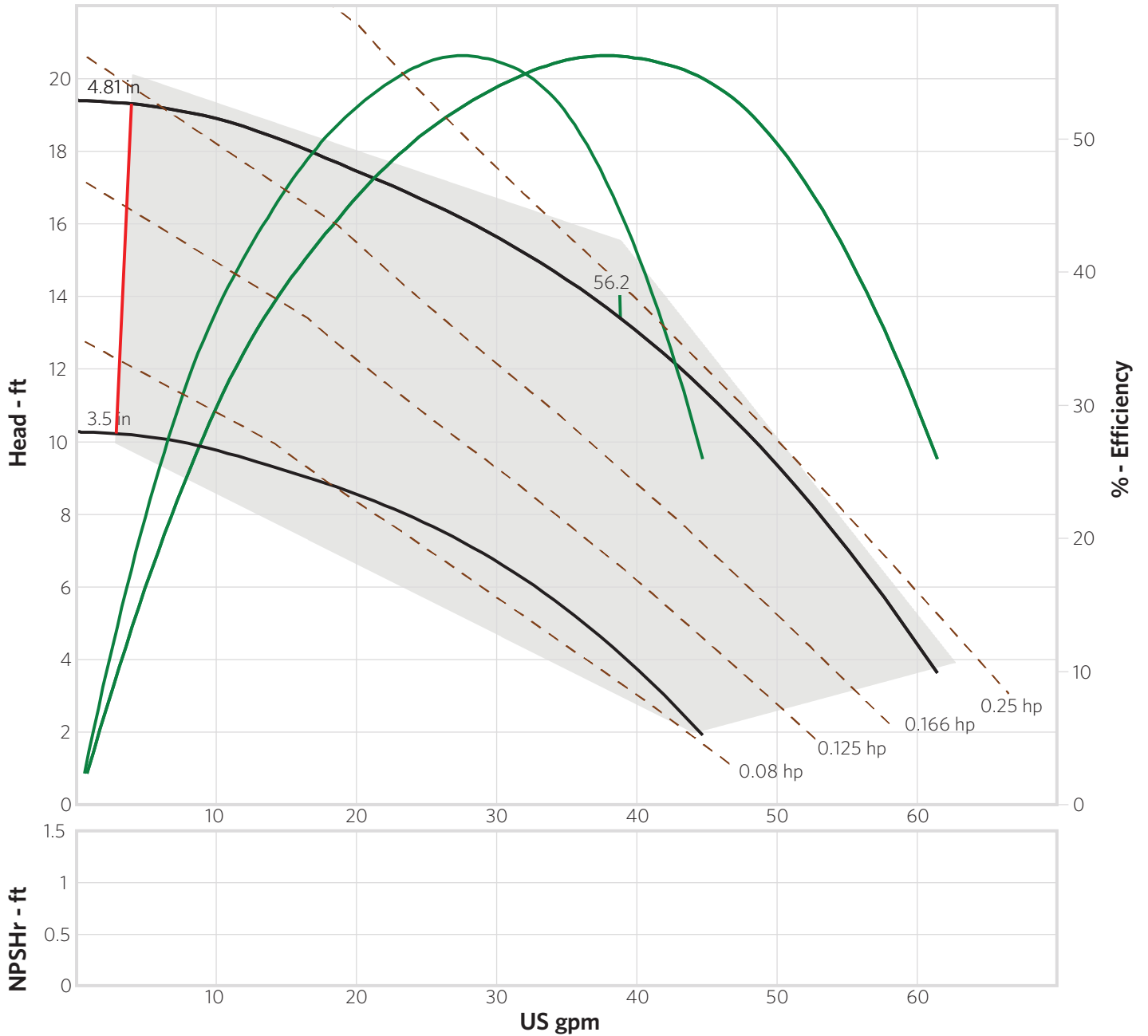
Water
 SG: 1
 Viscosity: 1.105 cP
 Temperature: 60 °F
 Vapor pressure: 0.2563 psi a
 Atm pressure: 14.7 psi a

Pump Limits:

Temperature: 180 °F
 Pressure: 100 psi g
 Sphere size: 0.306 in

Motor:

Standard: NEMA
 Enclosure: TEFC
 Full Speed: 1,750 rpm
 Sizing criteria: Max Power on Design Curve



Pump:

Type: Advance 1000 Speed: 1,750 rpm
 Connection Sizes: Suction: 1.5 in
 Discharge: 1.5 in

Fluid:

Water Temperature: 60 °F
 SG: 1 Vapor pressure: 0.2563 psi a
 Viscosity: 1.105 cP Atm pressure: 14.7 psi a

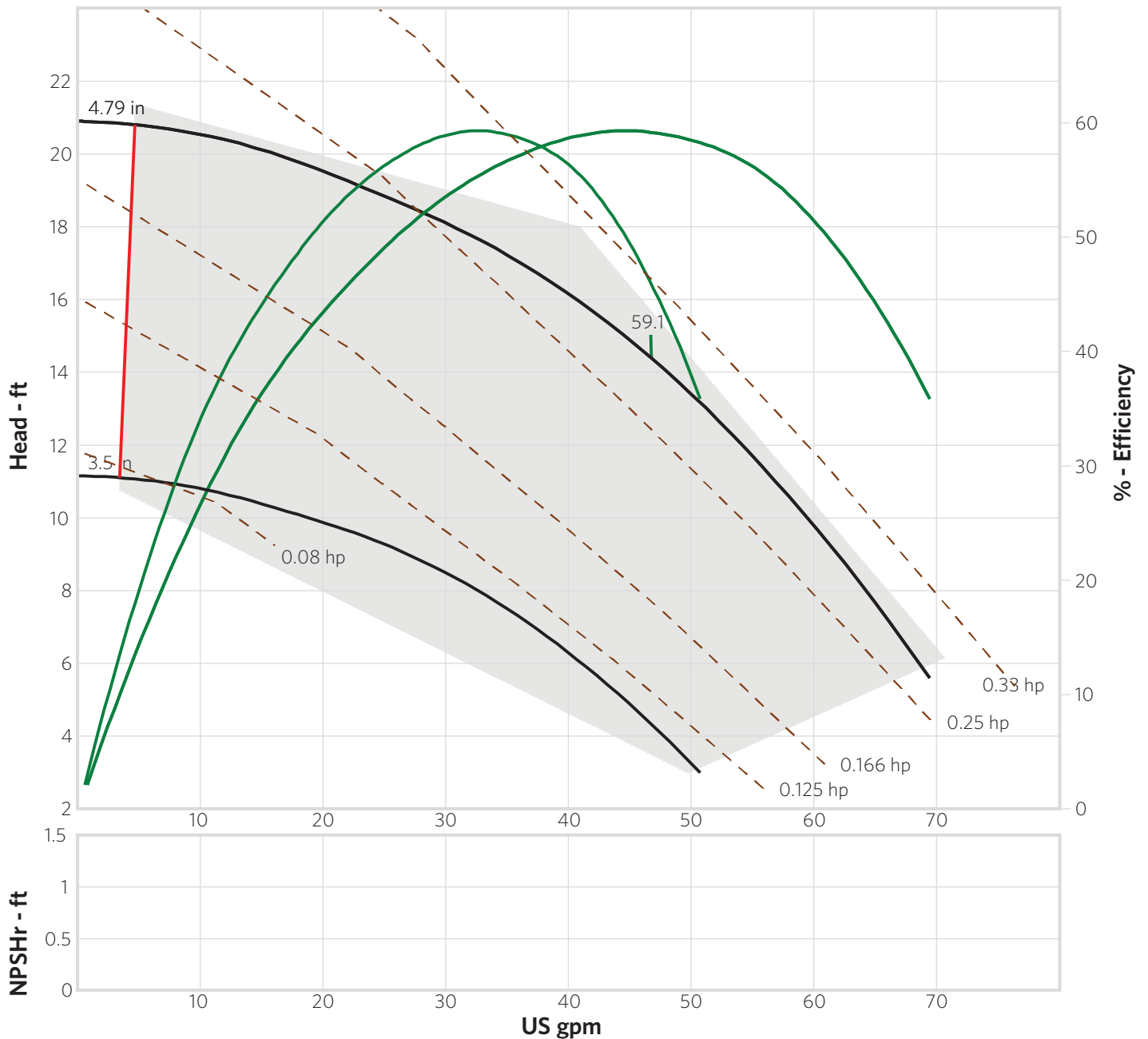
Pump Limits:

Temperature: 180 °F
 Pressure: 100 psi g
 Sphere size: 0.388 in

Motor:

Standard: NEMA Full Speed: 1,750 rpm
 Enclosure: TEFC

Sizing criteria: Max Power on Design Curve



Pump:

Type: Advance 1000
 Speed: 1,750 rpm
 Connection Sizes:
 Suction: 1.5 in
 Discharge: 1.5 in

Fluid:

Water
 SG: 1
 Viscosity: 1.105 cP
 Temperature: 60 °F
 Vapor pressure: 0.2563 psi a
 Atm pressure: 14.7 psi a

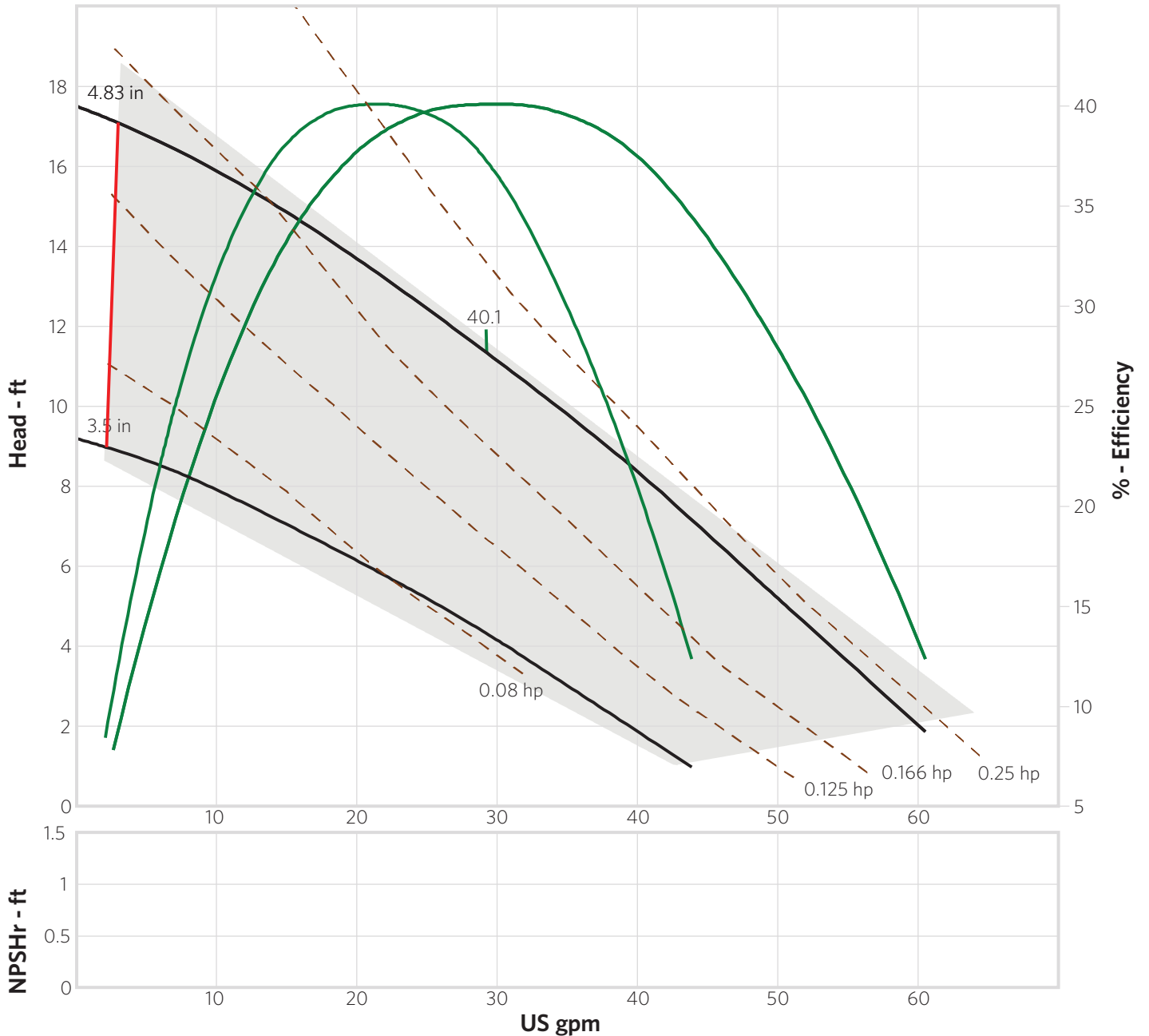
Pump Limits:

Temperature: 180 °F
 Pressure: 100 psi g
 Sphere size: 0.484 in

Motor:

Standard: NEMA
 Enclosure: TEFC
 Full Speed: 1,750 rpm

Sizing criteria: Max Power on Design Curve



Pump:

Type: Advance 1000
 Speed: 1,750 rpm
 Connection Sizes:
 Suction: 1.5 in
 Discharge: 1.5 in

Fluid:

Water
 SG: 1
 Viscosity: 1.105 cP
 Temperature: 60 °F
 Vapor pressure: 0.2563 psi a
 Atm pressure: 14.7 psi a

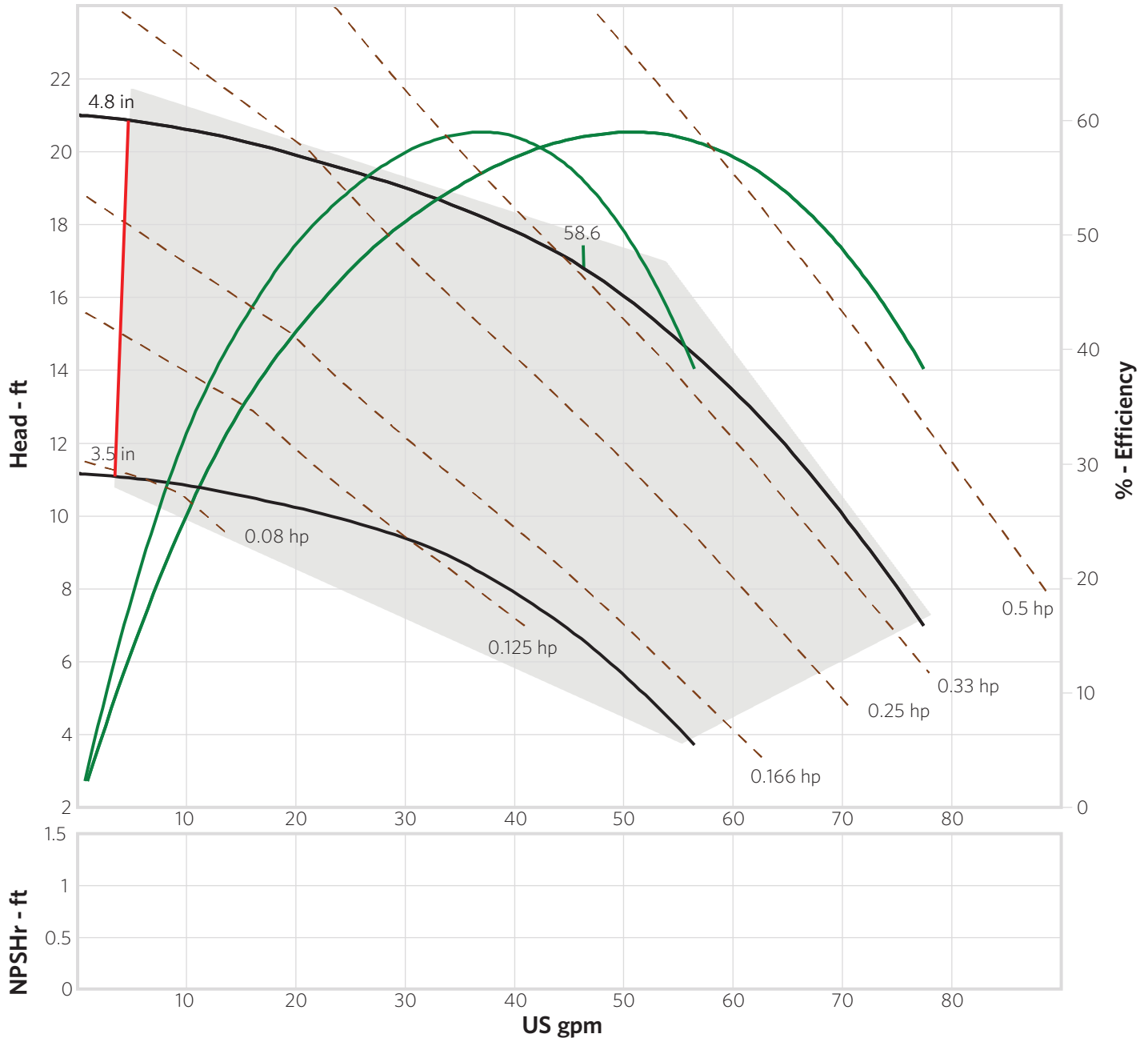
Pump Limits:

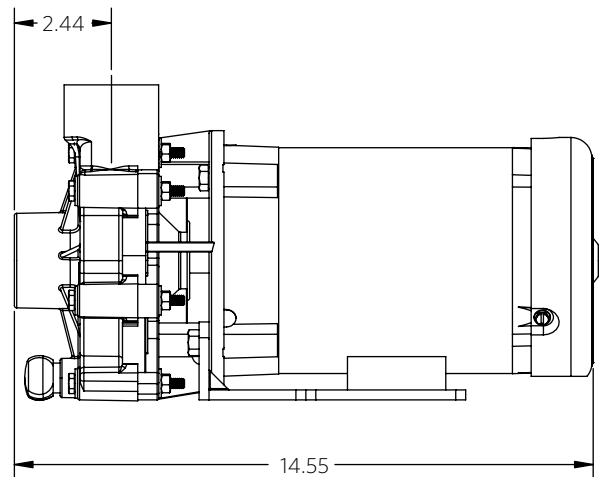
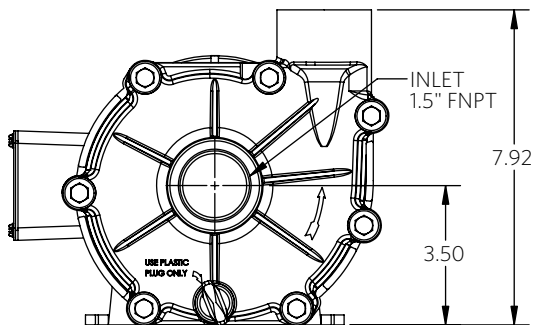
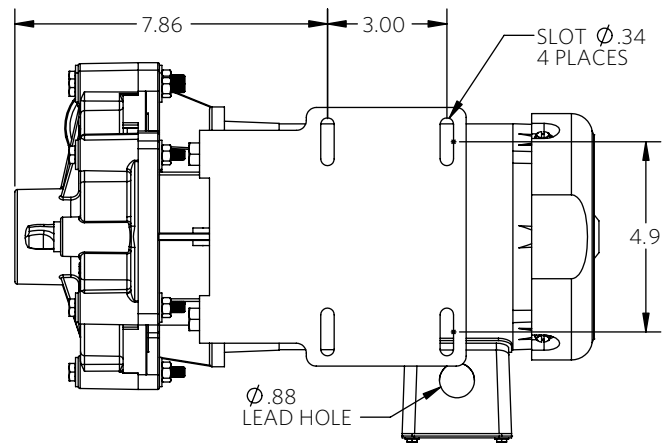
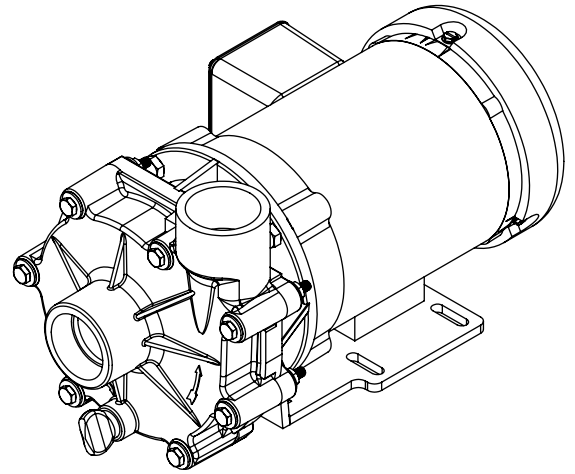
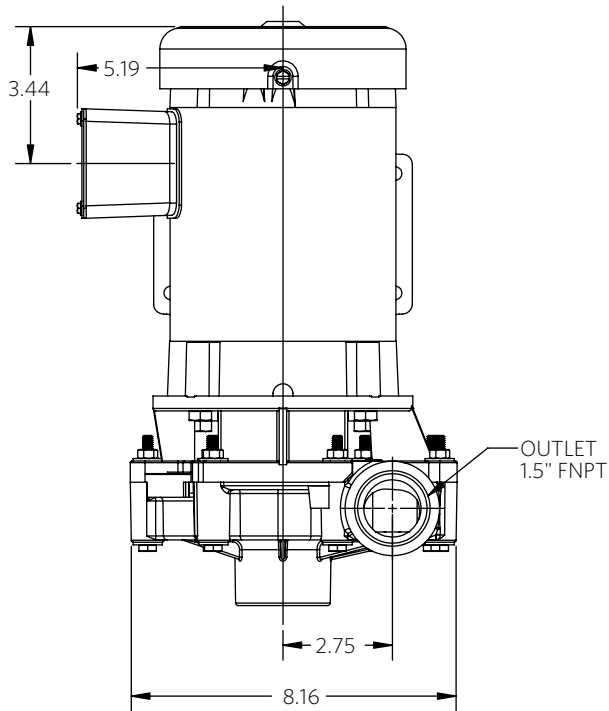
Temperature: 180 °F
 Pressure: 100 psi g
 Sphere size: 0.499 in

Motor:

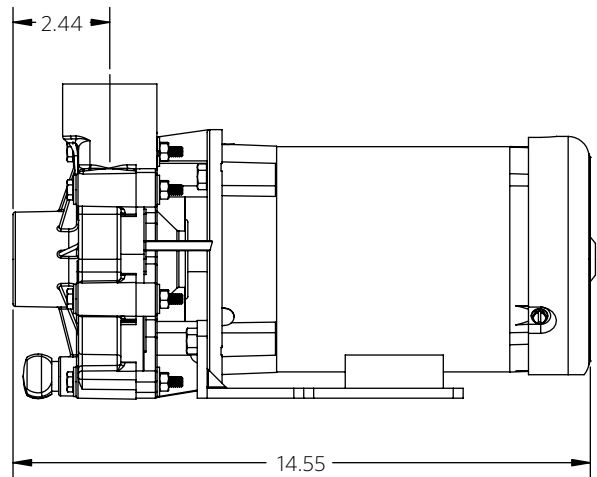
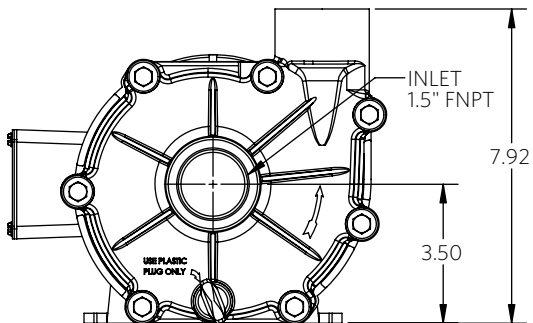
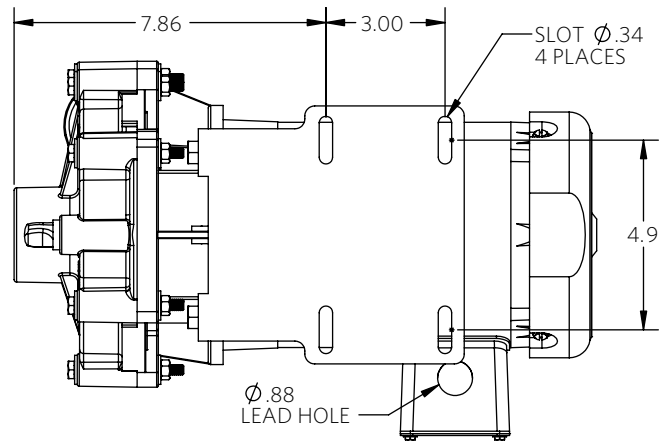
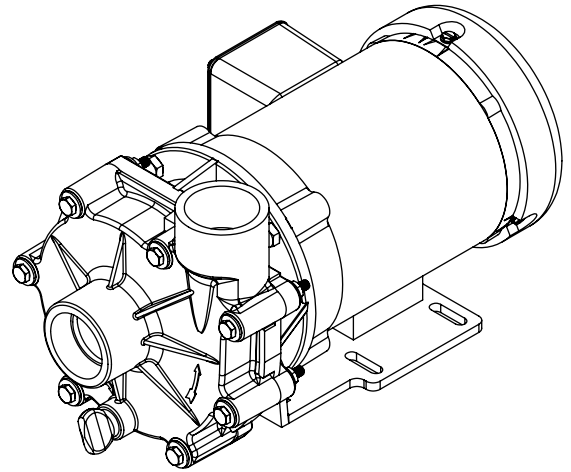
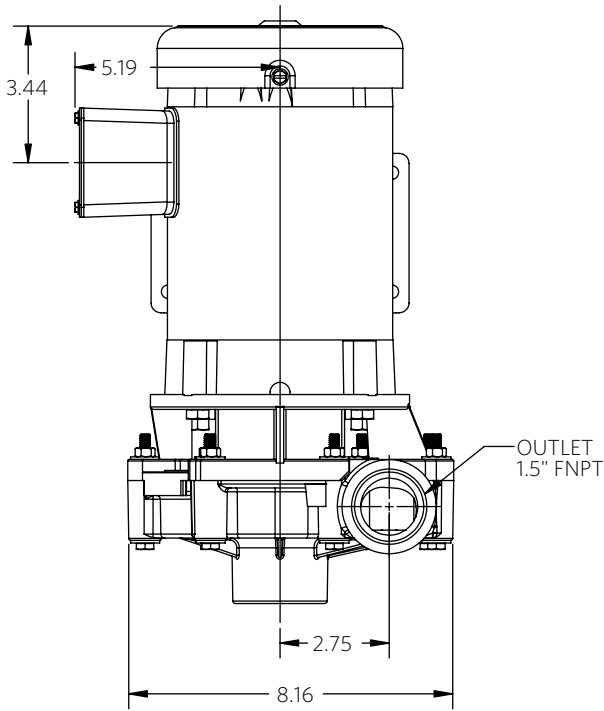
Standard: NEMA
 Enclosure: TEFC
 Full Speed: 1,750 rpm

Sizing criteria: Max Power on Design Curve

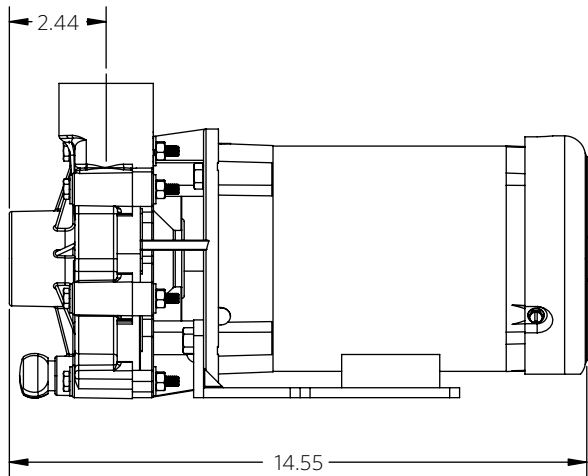
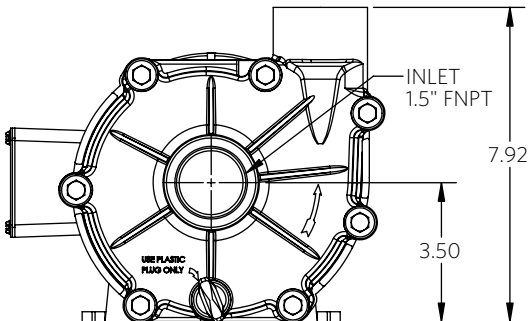
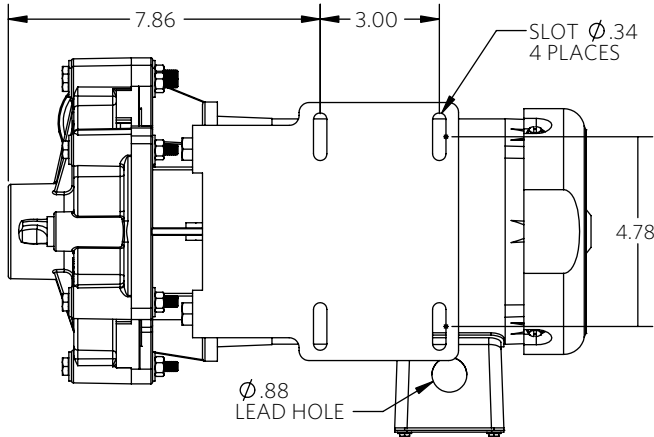
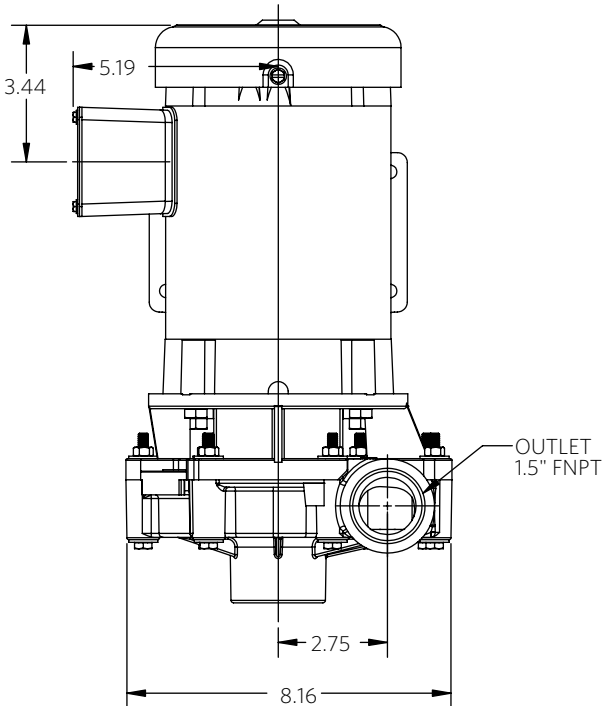
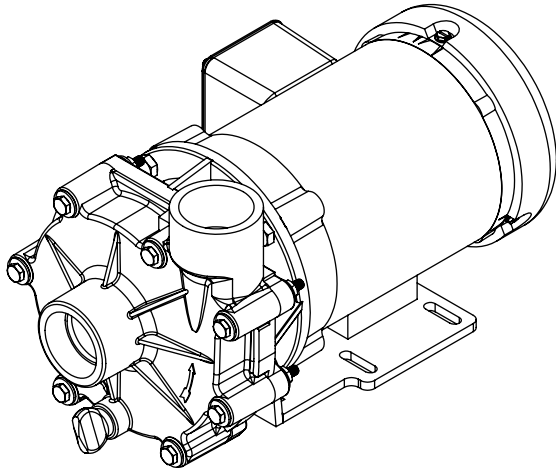




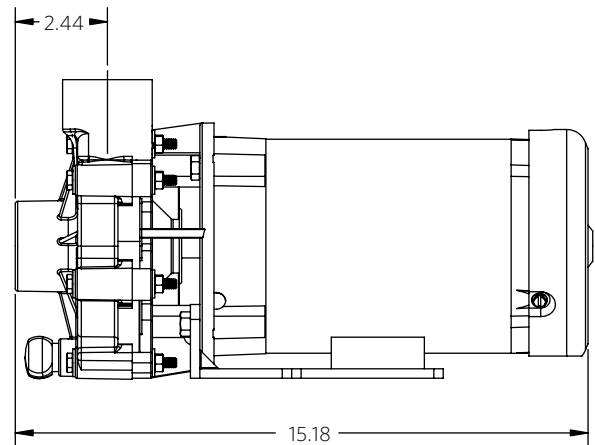
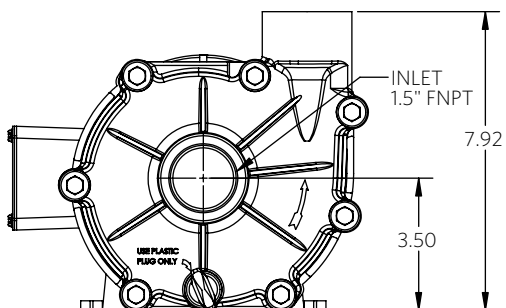
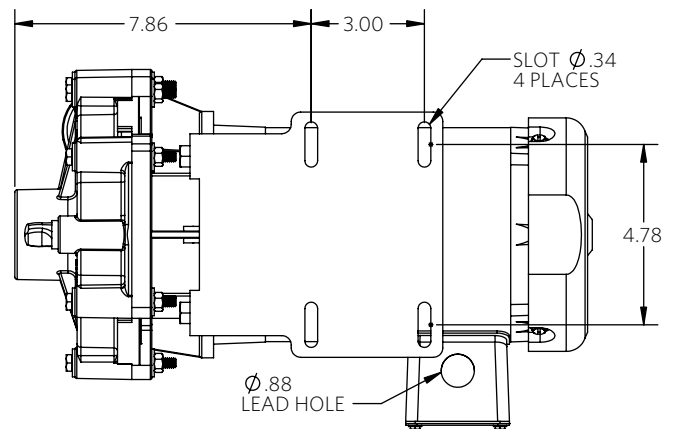
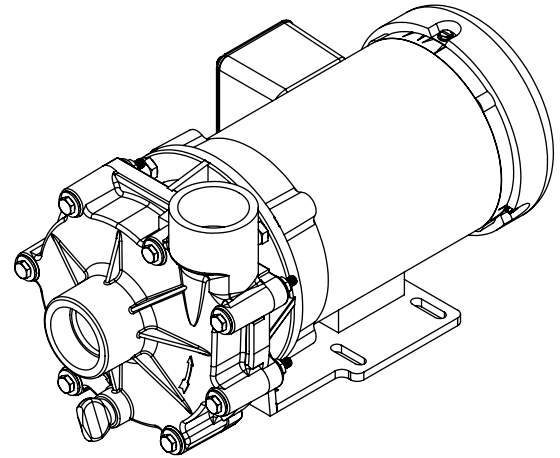
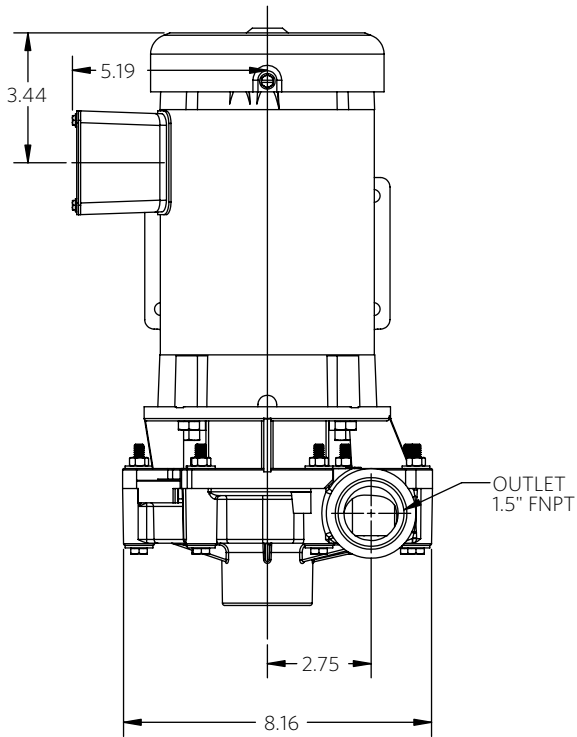
*Dimensions and illustrations are approximate and for reference only.
For engineering approved documentation contact MDM Inc.



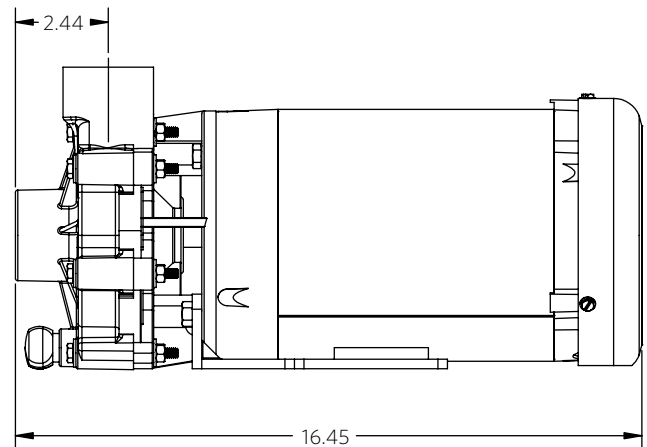
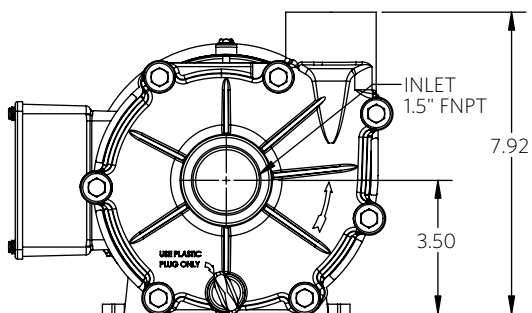
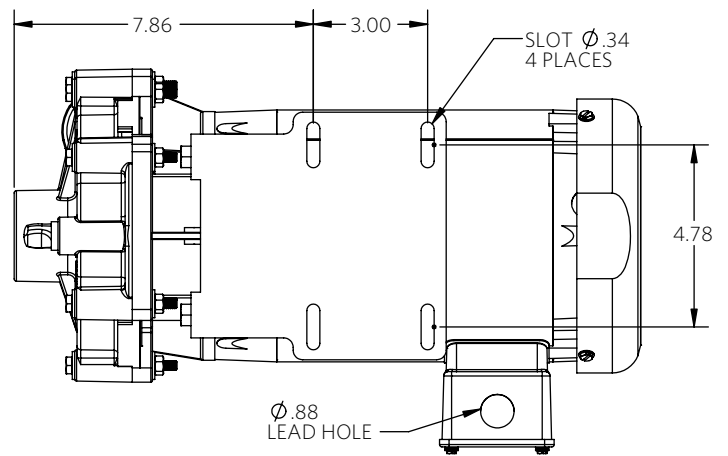
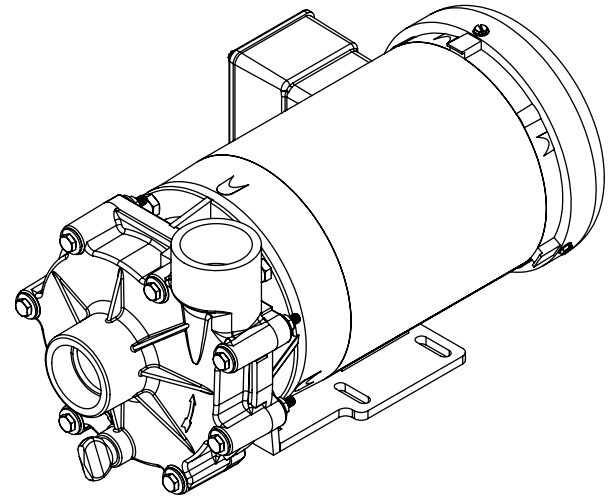
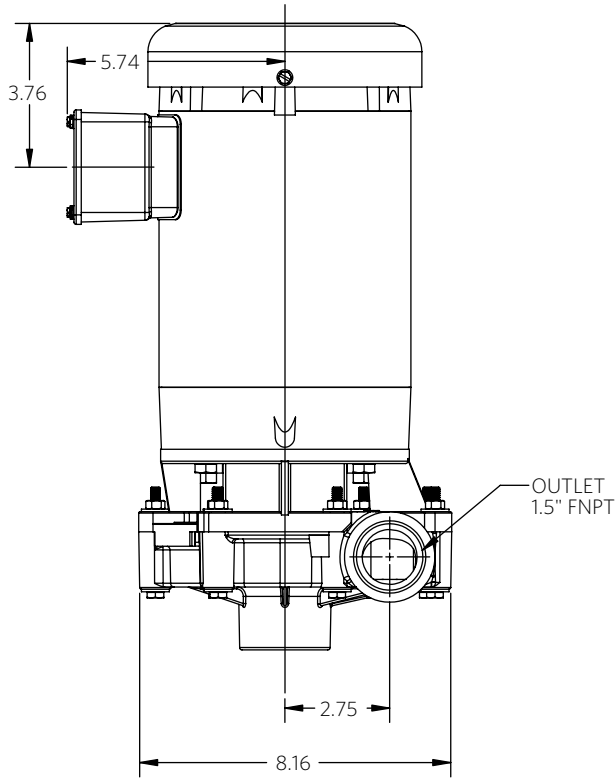
*Dimensions and illustrations are approximate and for reference only. For engineering approved documentation contact MDM Inc.



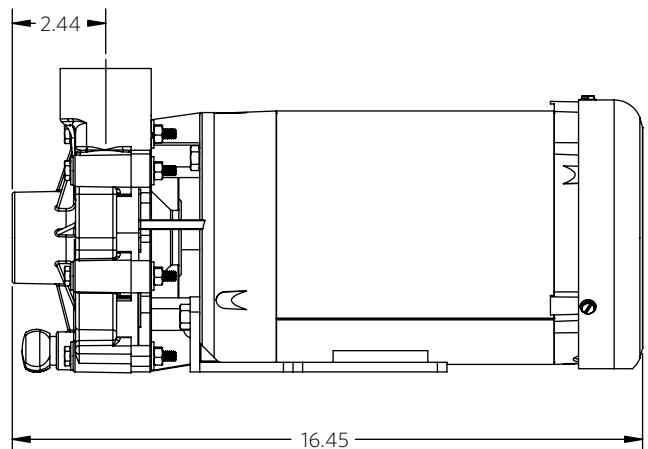
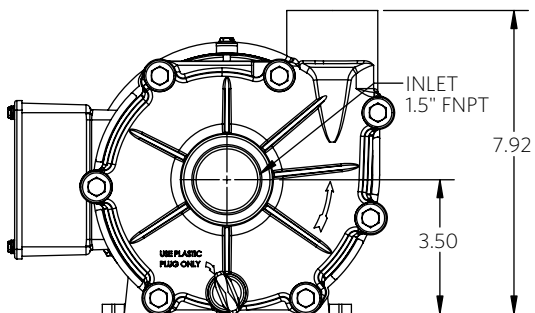
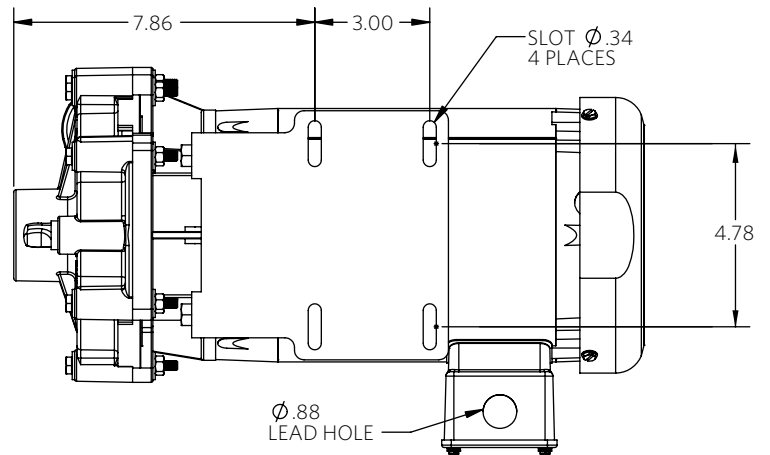
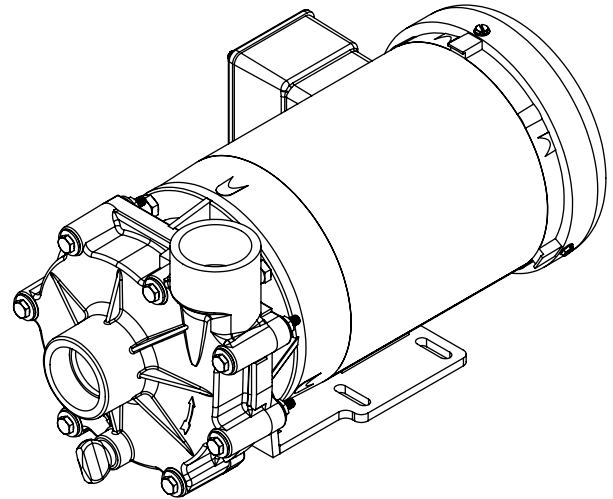
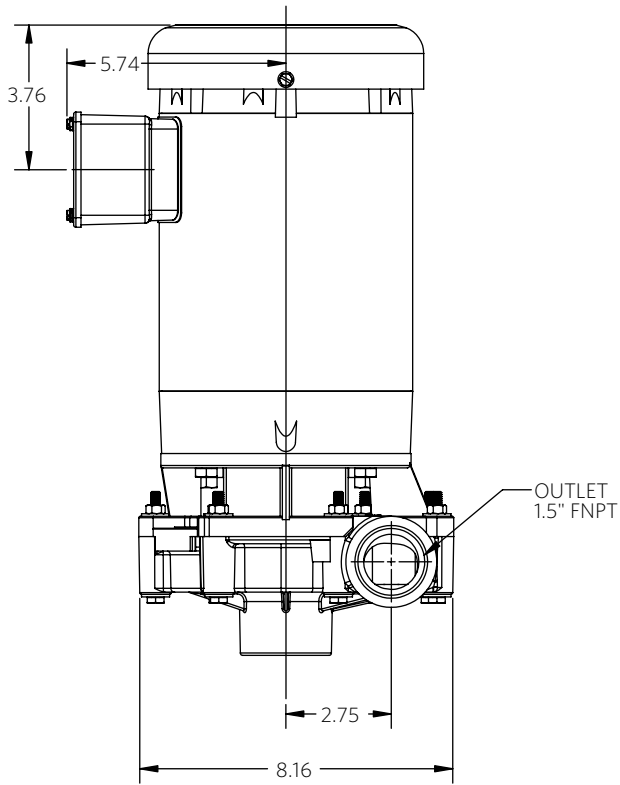
*Dimensions and illustrations are approximate and for reference only. For engineering approved documentation contact MDM Inc.



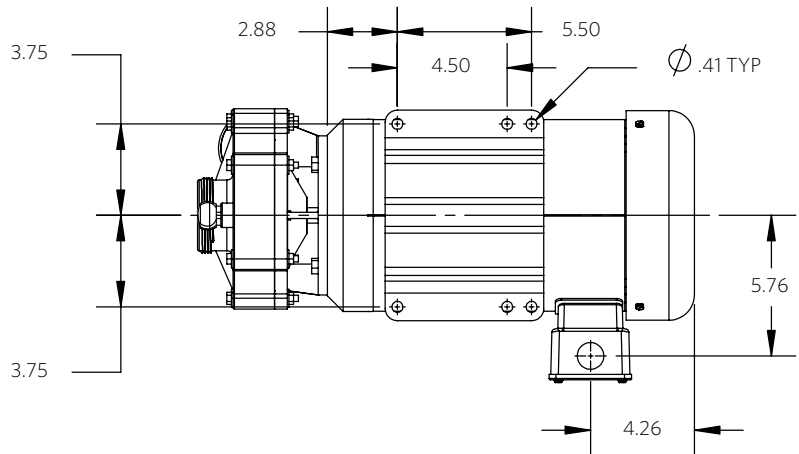
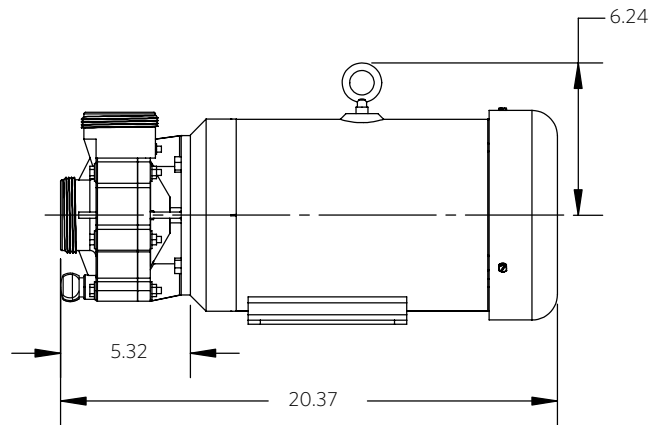
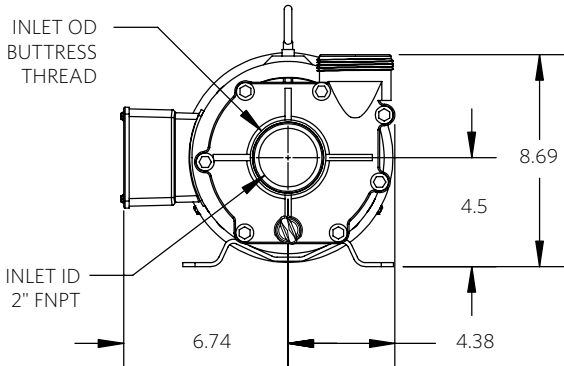
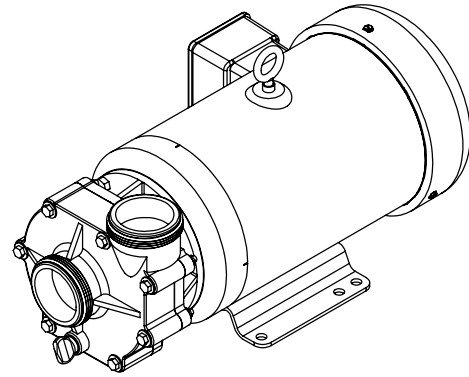
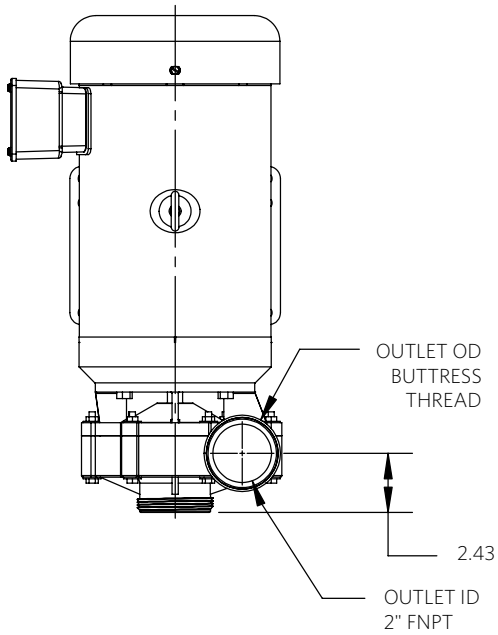
*Dimensions and illustrations are approximate and for reference only. For engineering approved documentation contact MDM Inc.



*Dimensions and illustrations are approximate and for reference only.
For engineering approved documentation contact MDM Inc.

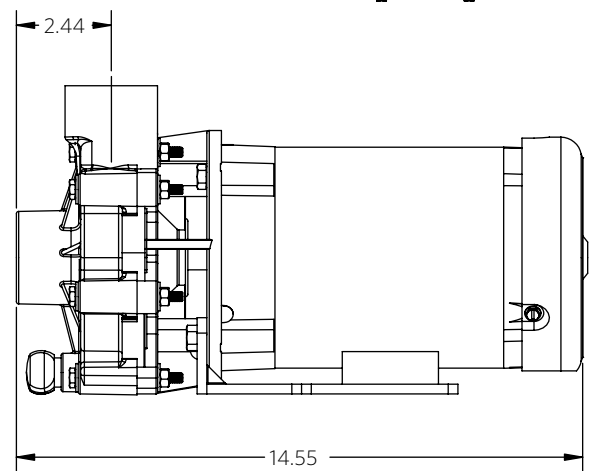
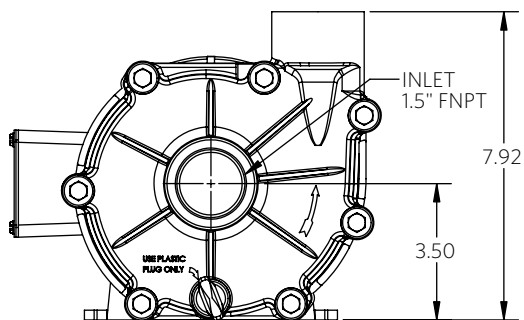
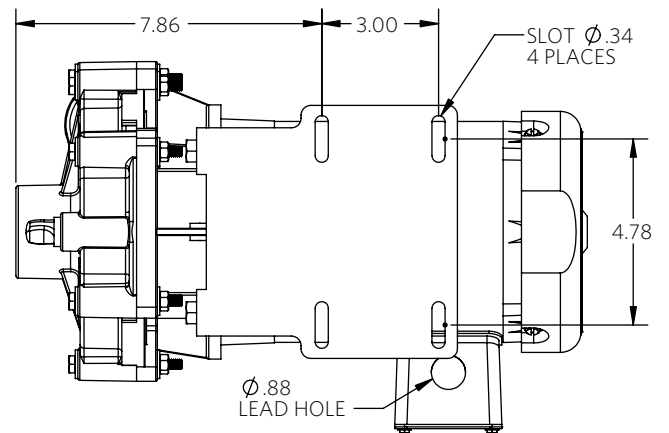
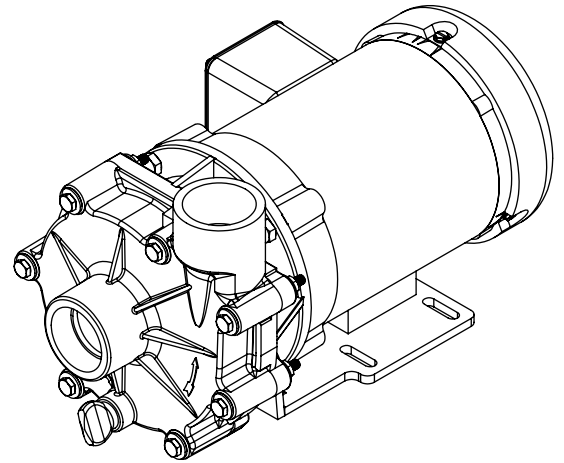
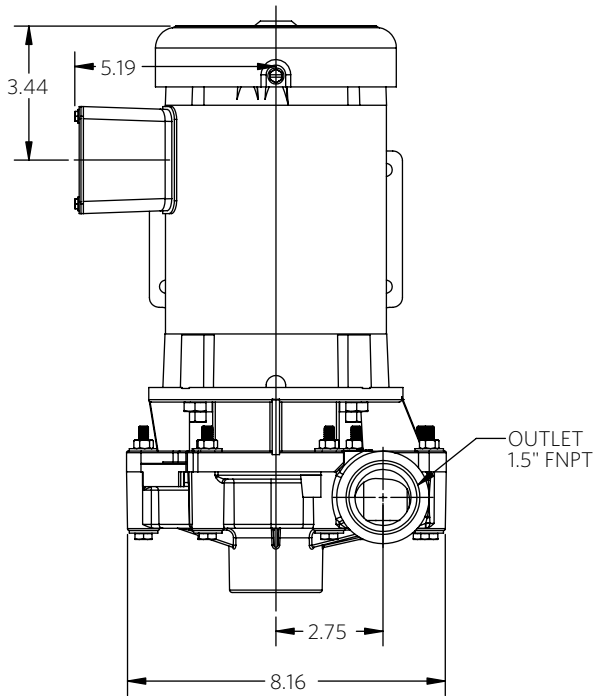


*Dimensions and illustrations are approximate and for reference only. For engineering approved documentation contact MDM Inc.

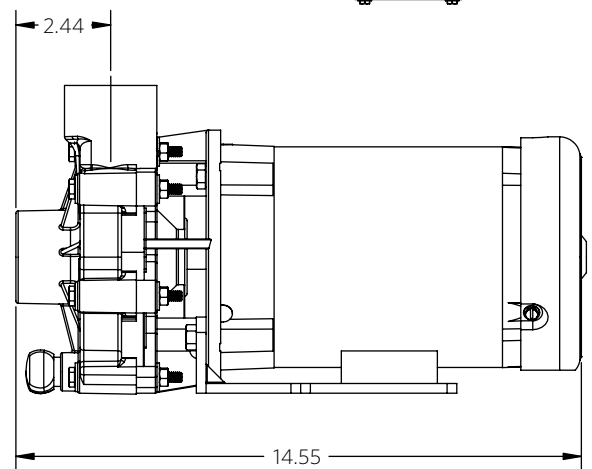
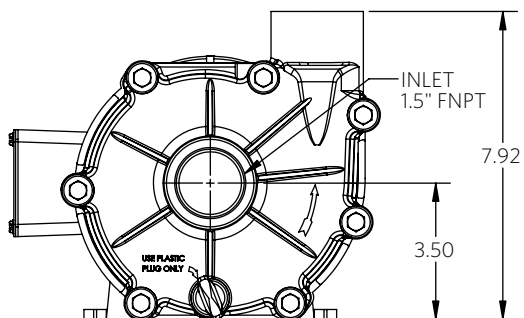
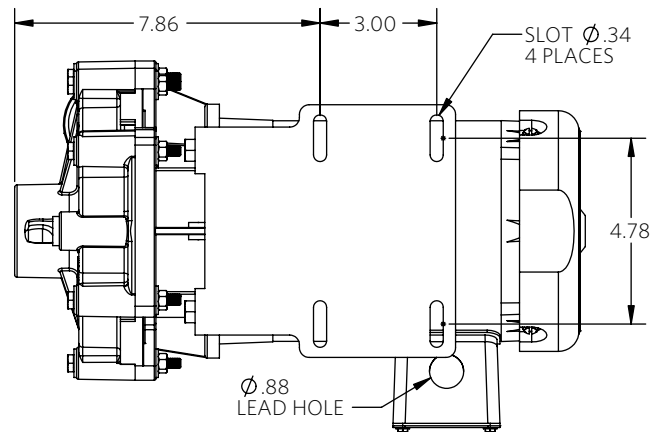
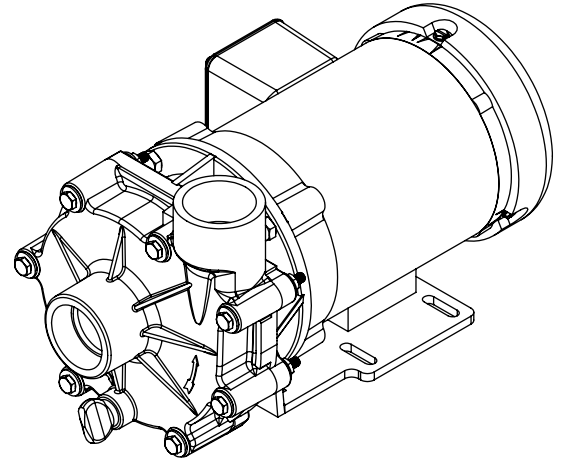
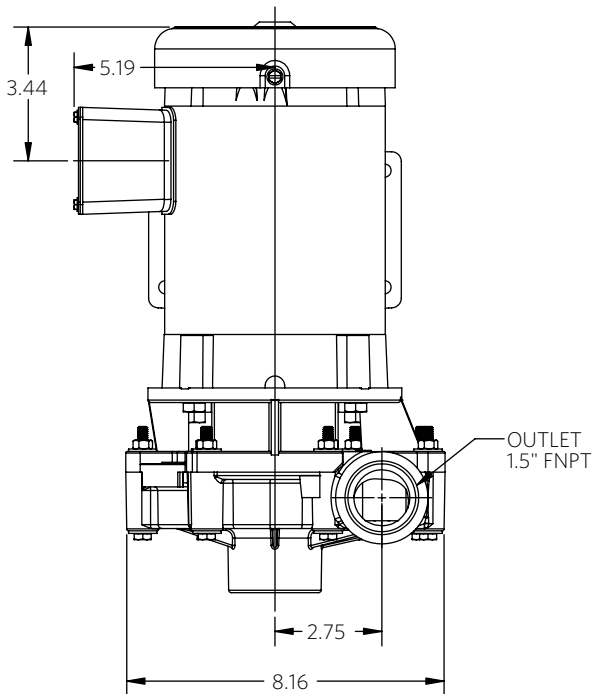


*Dimensions and illustrations are approximate and for reference only. For engineering approved documentation contact MDM Inc.



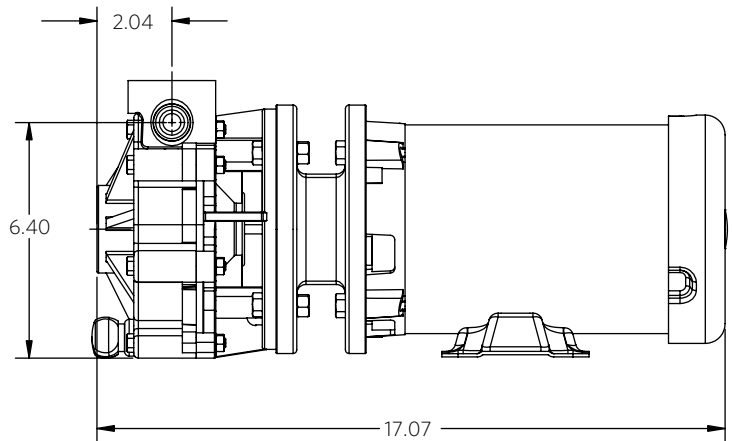
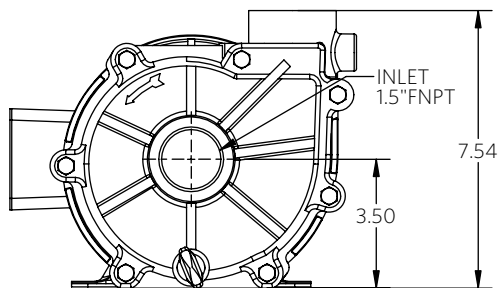
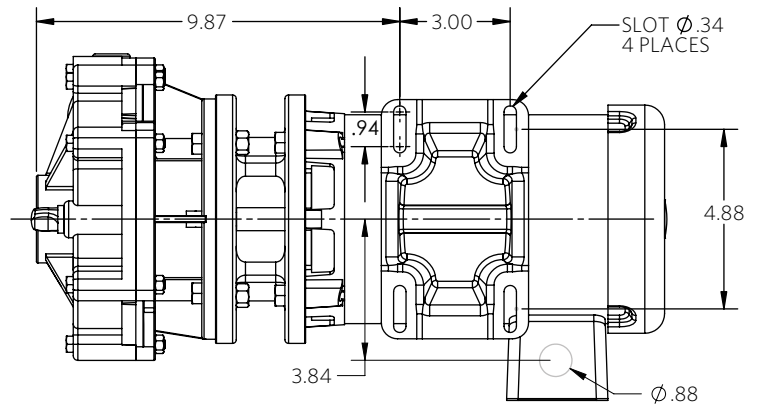
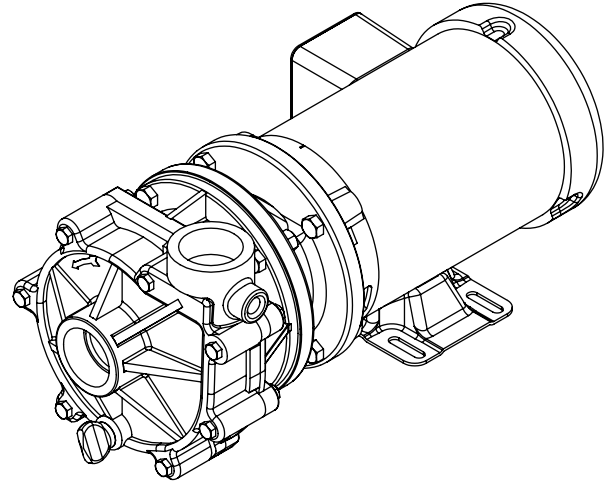
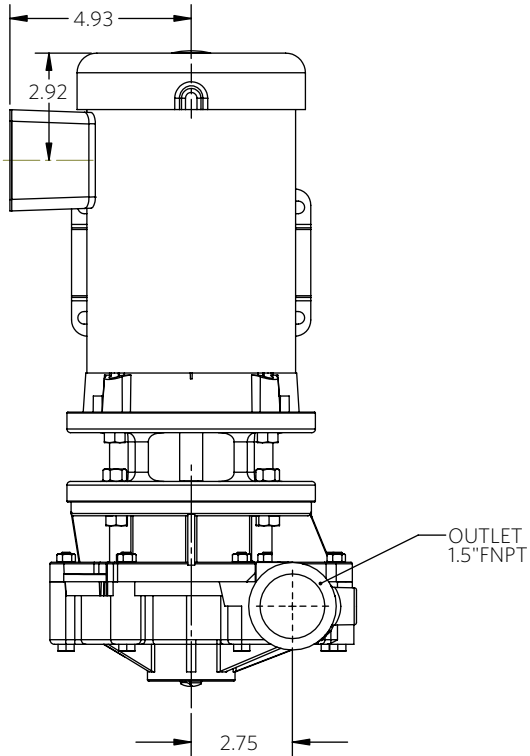


*Dimensions and illustrations are approximate and for reference only.
For engineering approved documentation contact MDM Inc.



*Dimensions and illustrations are approximate and for reference only. For engineering approved documentation contact MDM Inc.

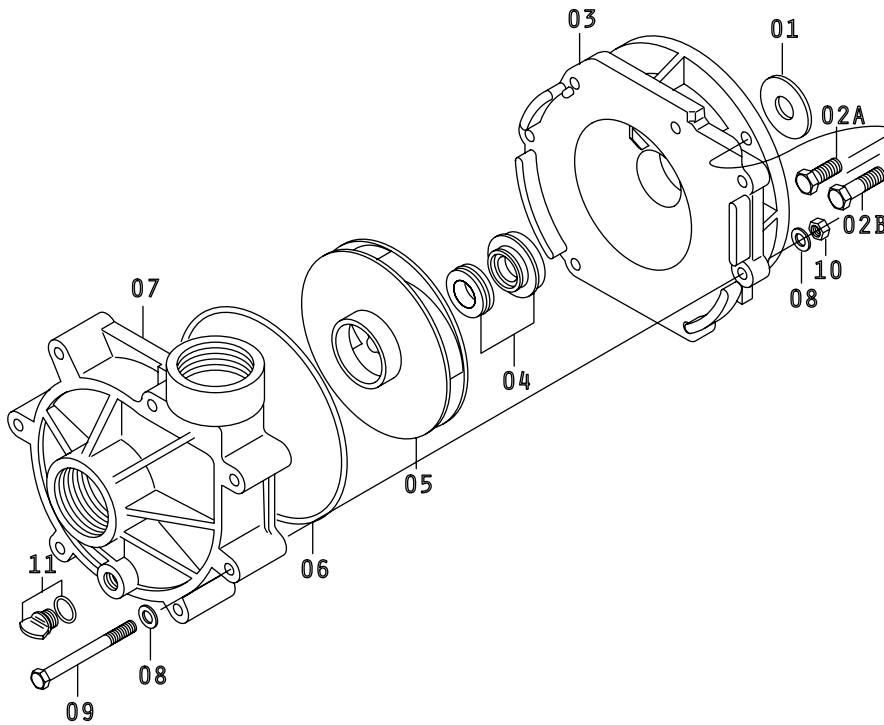
Advance® 1000 Extension Bracket Coupled Dimensional Drawings



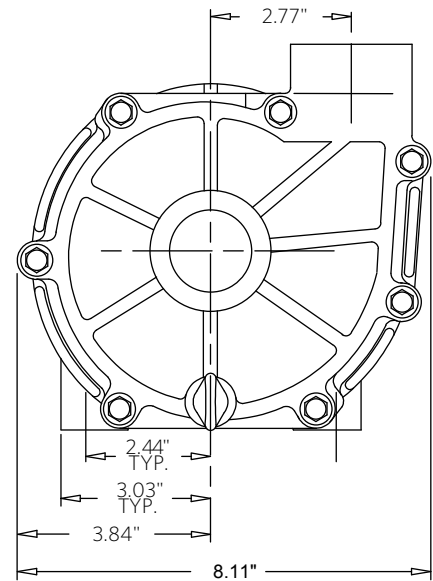
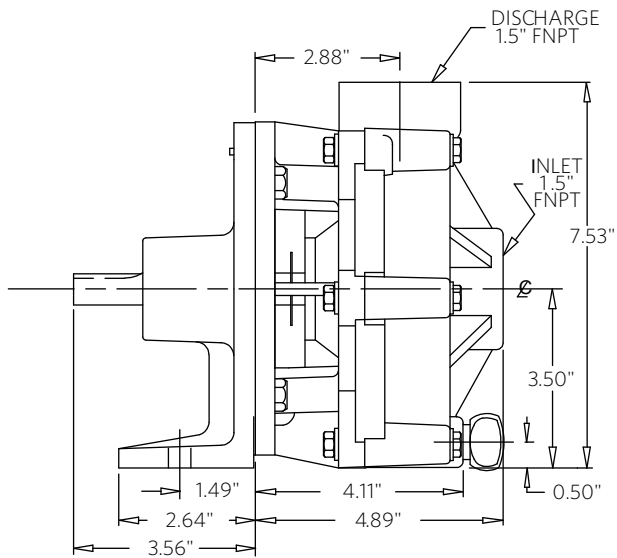
*Dimensions and illustrations are approximate and for reference only. For engineering approved documentation contact MDM Inc.



Advance® 1000 Dimensional Drawings - Exploded View and Pedestal



NUMBER	QTY	DESCRIPTION
01	1	SLINGER
02A, 02B	4	M-BOLT
03	1	BRACKET
04	1	MECHANICAL SEAL
05	1	IMPELLER
06	1	O-RING
07	1	VOLUTE
08	14	WASHER
09	7	PUMP BOLT
10	7	PUMP NUT
11	1	DRAIN PLUG & O-RING



*Dimensions and illustrations are approximate and for reference only. For engineering approved documentation contact MDM Inc.