



### NEW EQUIPMENT

- All types of pumping equipment, centrifugal and positive displacement.
- Quality, reliable products from well recognized brand name manufacturers.
- Expert equipment selection tailored to your application requirements.



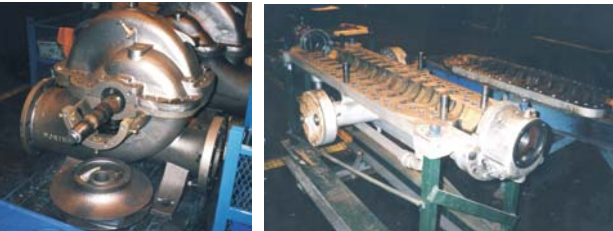
### REPLACEMENT PARTS

- Replacement parts for all types of pumps.
- Only top quality OEM and aftermarket repair parts in a variety of materials.
- All types of shaft seals; mechanical, lip, dynamic and packing.



### ACCESSORY ITEMS

- Full line of accessory items to complete your installation; valves, pipe connectors, pulsation dampeners, gauges, strainers, motors, control panels, level controls, adjustable speed drives, etc.



### REPAIR SERVICE

- Professional rotating equipment repair and component refurbishing.
- Repairs to all pump types and sizes, seals, valves, gearboxes, fans, blowers, etc.



### SPECIALTY SERVICES

- Equipment rental and leasing.
- Laser shaft alignment.
- Pump performance and hydrostatic testing.
- Motor electrical fitness testing.
- Field commissioning, inspection, alignment and repair of equipment.
- Vibration analysis and trending.
- Infrared thermography analysis.
- Product training and educational seminars.





## **BJM**

Heavy duty and general service submersible pumps for clean, solids laden, corrosive and abrasive services. Available with flanged, threaded and hose barb connections in a variety of material combinations with various control and installation accessories.

## **EBARA**

Stainless steel end-suction, multi-stage horizontal, multi-stage vertical, self-priming and submersible pumps with both threaded and flanged connections. Also a broad range of clean and solids handling cast iron submersible pumps and accessories.

## **ENVIROGEAR**

Complete line of process duty sealless magnetic drive internal rotary gear pumps. Truly a problem solving product line suitable for use in a wide array of applications. Available in a variety of materials and drive configurations.

## **GORMAN-RUPP**

Full line of self-priming, standard end-suction, engine driven and submersible type pumps for use with clean, corrosive, solids laden and abrasive fluids. Available in a variety of construction materials and drive configurations.

## **HIBON**

*(Ingersoll Rand)*

Extensive line of multi-stage centrifugal blowers, positive displacement blowers and low pressure compressors as well as complete package systems.

## **ITT INDUSTRIES**

• GOULDS PUMPS

ITT Industries Goulds Pumps division offers a complete line of industrial, municipal and commercial pumping equipment for use in handling every type of fluid with end-suction, double suction, multi-stage, magnetic drive, cantilever, turbine and axial flow pump designs.

## **ITT INDUSTRIES**

• ProSmart  
• PumpSmart

ITT Industries Monitoring and Controls division includes PumpSmart advanced variable speed inverter drives, specifically designed for controlling centrifugal pumps and the ProSmart wireless condition monitoring system for plant wide equipment monitoring.

## **MEGGA**

Full line of general service pump products consisting of end-suction, self-priming, vertical, multi-stage, submersible centrifugal and air-operated diaphragm designs as well as engine driven and hand operated pumps, in a variety of materials and drive configurations.

## **MTH**

Single and multi-stage regenerative turbine and centrifugal type pumps in close-coupled and frame mounted configurations in both sealed and canned motor designs. Available in iron, bronze and stainless steel materials of construction.

## **PROCAST**

OEM quality aftermarket pump replacement parts for use in many popular brands of industrial and municipal pumps. Specialty parts replication also available.

## **SLICK**

Full line of shaft sealing products for use in centrifugal and positive displacement pumps. Cartridge mounted and component style in single and double arrangements.

## **TOM-PAC**

Comprehensive line of high performance shaft packing compounds and advanced lubrication products. Both general use and food grade formulations available.

## **VERTIFLO**

Full line of vertical, horizontal and self-priming industrial duty centrifugal pumps in a variety of materials and drive configurations.



**RELY ON US FOR ALL YOUR PUMP NEEDS!**

3235 Wharton Way, Mississauga, Ontario Canada L4X 2B6  
Phn: 905-629-3100, Fax: 905-629-3500, email: info@prospectech.com

*“Representatives to serve you in Mississauga, Burlington, Brantford and Windsor”*