



## All-Pur™ Food Grade G Series Pumps Specifications

All-Flo's All-Pur Food Grade G Series pumps offer a unique compact design. Featuring a conductive polyethylene air section, integrated muffler, and optional manual drain valves, G Series pumps are perfect for a variety of food grade applications. G Series pumps are also FDA, CE, ATEX and USP Class VI compliant.

### Available Materials:

#### LIQUID SECTION MATERIALS

- 316 Stainless Steel

#### AIR SECTION MATERIALS

- Conductive Polyethylene

#### DIAPHRAGM MATERIALS

- Integral PTFE
- FDA EPDM

#### VALVE/BALL MATERIALS

- FDA EPDM
- PTFE

#### VALVE SEAT MATERIALS

- N/A (Part of Liquid Section)

#### O-RING MATERIALS

- PTFE
- FDA EPDM
- FKM

#### OPTIONS

- Cycle Counter
- Manual Drain Valves

### 3/4 in. G SERIES PUMP - G075



**Air Inlet:** 1/4" FNPT

**Tri-Clamp Inlet:** 1"

**Tri-Clamp Discharge:** 1"

**Max. Pressure:** 100 psi (7 bar)

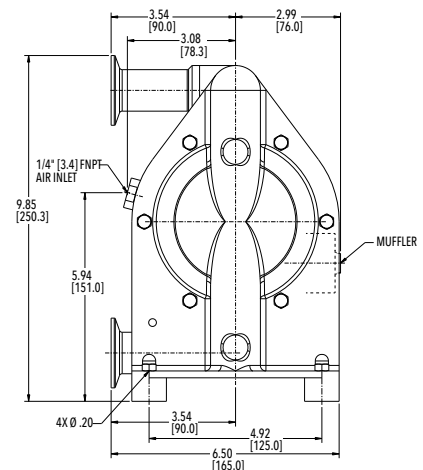
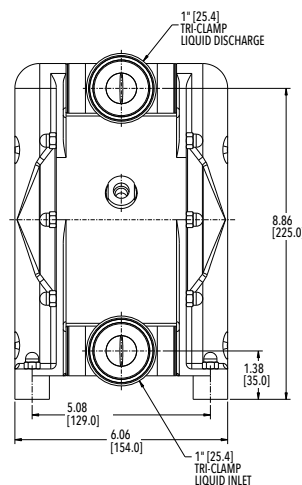
**Max. Temperature:** 176°F (80°C)

**Max. Flow Rate:** 20 gpm (75 lpm)

**Max. Suction Lift:**  
6.6 ft-H<sub>2</sub>O (2 m-H<sub>2</sub>O) Dry  
29.5 ft-H<sub>2</sub>O (9 m-H<sub>2</sub>O) Wet

**Max. Diameter Solids:** 7/20" (9 mm)

**Displacement per Stroke:** 0.03 gal (0.1 L)

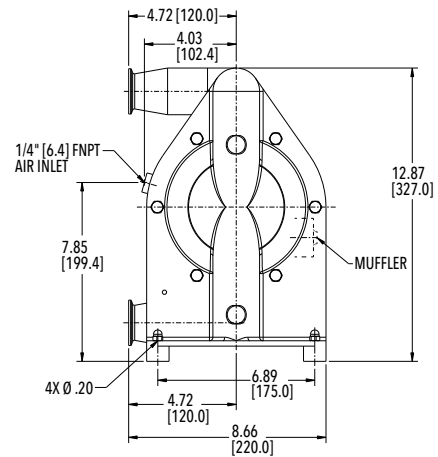
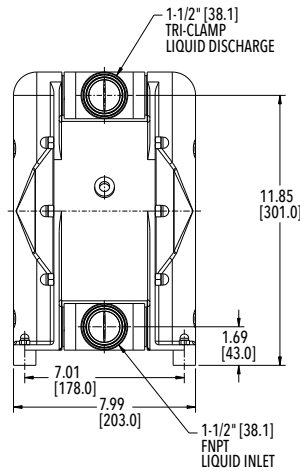


## 1-1/4 in. G SERIES PUMP - G125



**Air Inlet:** 1/4" FNPT  
**Tri-Clamp Inlet:** 1-1/2"  
**Tri-Clamp Discharge:** 1-1/2"  
**Max. Pressure:** 100 psi (7 bar)  
**Max. Temperature:** 176°F (80°C)

**Max. Flow Rate:** 40 gpm (150 lpm)  
**Max. Suction Lift:**  
 6.6 ft-H<sub>2</sub>O (2 m-H<sub>2</sub>O) Dry  
 29.5 ft-H<sub>2</sub>O (9 m-H<sub>2</sub>O) Wet  
**Max. Diameter Solids:** 15/32" (12 mm)  
**Displacement per Stroke:** 0.09 gal (0.34 L)



## 2 in. G SERIES PUMP - G200



**Air Inlet:** 1/2" FNPT  
**Tri-Clamp Inlet:** 2"  
**Tri-Clamp Discharge:** 2"  
**Max. Pressure:** 100 psi (7 bar)  
**Max. Temperature:** 176°F (80°C)

**Max. Flow Rate:** 106 gpm (400 lpm)  
**Max. Suction Lift:**  
 9.8 ft-H<sub>2</sub>O (3 m-H<sub>2</sub>O) Dry  
 29.5 ft-H<sub>2</sub>O (9 m-H<sub>2</sub>O) Wet  
**Max. Diameter Solids:** 9/16" (14 mm)  
**Displacement per Stroke:** 0.26 gal (0.98 L)

